

# County Fiscal Information for the Combined Education Committee

August 3, 2016

# Op Plan Summary

In Millions	FY 17	FY 18	FY 19	FY 20	FY 21	FY 22
Revenues	\$388.4	\$395.5	\$406.5	\$417.0	\$432.1	\$449.6
Expenditures	388.4	395.5	406.5	415.3	430.4	446.0
Balance	\$0	\$0	\$0	\$1.7	\$1.7	\$3.6
% of Budget	<b>0.0%</b>	<b>0.0%</b>	<b>0.0%</b>	<b>0.4%</b>	<b>0.4%</b>	<b>0.8%</b>

# County Budget History

In Millions	FY 09	FY 10	FY 11	FY 12	FY 13	FY 14	FY 15	FY 16
Budget	\$353.0	\$354.5	\$349.0	\$350.3	\$361.7	\$367.1	\$368.5	\$380.0
Annual Change	24.6	1.5	(5.5)	1.3	11.4	5.4	1.4	11.5
BOE Funding	162.2	167.7	164.9	163.5	168.9	169.1	171.0	176.2
Annual Change	13.0	5.5	(2.8)	(1.4)	5.4	0.2	1.9	5.2

Revenue

# Major Revenues

- Property tax is more than 50% of our revenue
- Property and income taxes more than 87%
- Adding recordation brings it to more than 90%

# Operating Budget Revenue

<b>In Millions</b>	<b>High</b>	<b>FY 16 Actual</b>	<b>Difference</b>
Total Property Tax	\$205.8	\$197.5	(\$8.3)
Recordation	22.8	14.0	(8.8)
HUR	11.8	1.0	(10.8)
Investment Income	8.6	0.8	(7.8)
Building Permits	1.4	0.5	(0.9)

# Revenue

- Property tax
  - Real property - \$1.018/\$100 of assessed value
  - \$0.01 is approximately \$1.8M
  - Watershed Restoration Fund
- Personal property - \$2.515/\$100
- Income tax – 3.03% of State taxable income, approximately \$400,000 for every 0.01%
- Recordation tax - \$5.00/\$500 or 1%

Taxes



# Tax Rate Changes

- The changes total approximately \$7M/year.

## County Property Tax Rates (Non-Municipal Areas) For Fiscal Years 2011 Through 2016

SUBDIVISION	FY 2011	FY 2012	FY 2013	FY 2014	FY 2015	FY 2016
ALLEGHANY	0.9829	0.9820	0.9810	0.9800	0.9790	0.9780
ANNE ARUNDEL	0.880	0.910	0.941	0.950	0.943	0.923
BALTIMORE CITY	2.268	2.268	2.268	2.248	2.248	2.248
BALTIMORE COUNTY	1.100	1.100	1.100	1.100	1.100	1.100
CALVERT	0.892	0.892	0.892	0.892	0.892	0.892
CAROLINE	0.870	0.870	0.890	0.940	0.960	0.980
CARROLL	1.048	1.028	1.018	1.018	1.018	1.018
CECIL	0.915	0.940	0.9907	0.9907	0.9907	0.9907
CHARLES	0.962	1.003	1.057	1.141	1.141	1.141
DORCHESTER	0.896	0.976	0.976	0.976	0.976	0.976
FREDERICK	0.936	0.936	0.936	1.064	1.060	1.060
GARRETT	0.990	0.990	0.990	0.990	0.990	0.990
HARFORD	1.042	1.042	1.042	1.042	1.042	1.042
HOWARD	1.014	1.014	1.014	1.014	1.014	1.014
KENT	1.022	1.022	1.022	1.022	1.022	1.022
MONTGOMERY	0.904	0.946	0.9910	1.010	0.996	0.987
PRINCE GEORGE'S	0.960	0.960	0.960	0.960	0.960	1.000
QUEEN ANNE'S	0.7671	0.8471	0.8471	0.8471	0.8471	0.8471
ST. MARY'S	0.857	0.857	0.857	0.857	0.857	0.8523
SOMERSET	0.884	0.884	0.884	0.915	0.915	1.000
TALBOT	0.432	0.448	0.491	0.512	0.527	0.536
WASHINGTON	0.948	0.948	0.948	0.948	0.948	0.948
WICOMICO	0.759	0.769	0.8404	0.9086	0.9516	0.9516
WORCESTER	0.700	0.700	0.770	0.770	0.770	0.835

**Local Income Tax Rates**  
**Rates as Percentage of Maryland Taxable Income**  
**Tax/Calendar Years 2011 Through 2016**

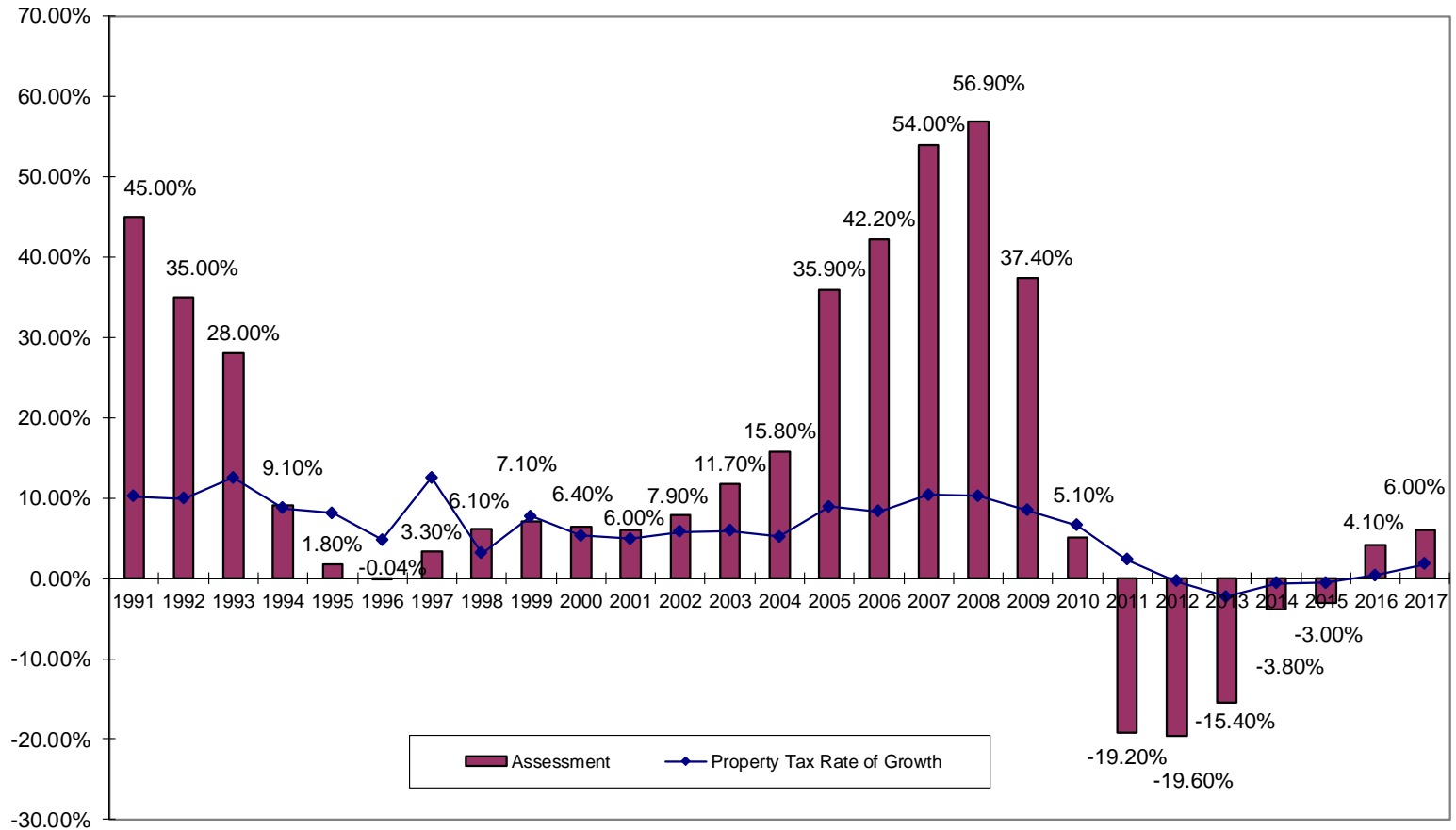
SUBDIVISION	CY 2011	CY 2012	CY 2013	CY 2014	CY 2015	CY 2016
ALLEGHANY	3.05%	3.05%	3.05%	3.05%	3.05%	3.05%
ANNE ARUNDEL	2.56%	2.49%	2.56%	2.56%	2.56%	2.50%
BALTIMORE CITY	3.20%	3.20%	3.20%	3.20%	3.20%	3.20%
BALTIMORE COUNTY	2.83%	2.83%	2.83%	2.83%	2.83%	2.83%
CALVERT	2.80%	2.80%	2.80%	2.80%	2.80%	2.80%
CAROLINE	2.63%	2.63%	2.63%	2.73%	2.73%	2.73%
CARROLL	3.05%	3.05%	3.05%	3.04%	3.03%	3.03%
CECIL	2.80%	2.80%	2.80%	2.80%	2.80%	2.80%
CHARLES	2.90%	2.90%	2.90%	3.03%	3.03%	3.03%
DORCHESTER	2.62%	2.62%	2.62%	2.62%	2.62%	2.62%
FREDERICK	2.96%	2.96%	2.96%	2.96%	2.96%	2.96%
GARRETT	2.65%	2.65%	2.65%	2.65%	2.65%	2.65%
HARFORD	3.06%	3.06%	3.06%	3.06%	3.06%	3.06%
HOWARD	3.20%	3.20%	3.20%	3.20%	3.20%	3.20%
KENT	2.85%	2.85%	2.85%	2.85%	2.85%	2.85%
MONTGOMERY	3.20%	3.20%	3.20%	3.20%	3.20%	3.20%
PRINCE GEORGE'S	3.20%	3.20%	3.20%	3.20%	3.20%	3.20%
QUEEN ANNE'S	2.85%	3.20%	3.20%	3.20%	3.20%	3.20%
ST. MARY'S	3.00%	3.00%	3.00%	3.00%	3.00%	3.00%
SOMERSET	3.15%	3.15%	3.15%	3.15%	3.15%	3.15%
TALBOT	2.25%	2.25%	2.40%	2.40%	2.40%	2.40%
WASHINGTON	2.80%	2.80%	2.80%	2.80%	2.80%	2.80%
WICOMICO	3.10%	3.10%	3.20%	3.20%	3.20%	3.20%
WORCESTER	1.25%	1.25%	1.25%	1.25%	1.25%	1.75%

Back to Revenue

# Revenue

- Property tax
  - Three assessment groups
  - Increases are phased in over three years
  - Decreases are phased in immediately
  - Homestead Credit
  - Other credits
    - Employment
    - Green
    - Fallen Hero

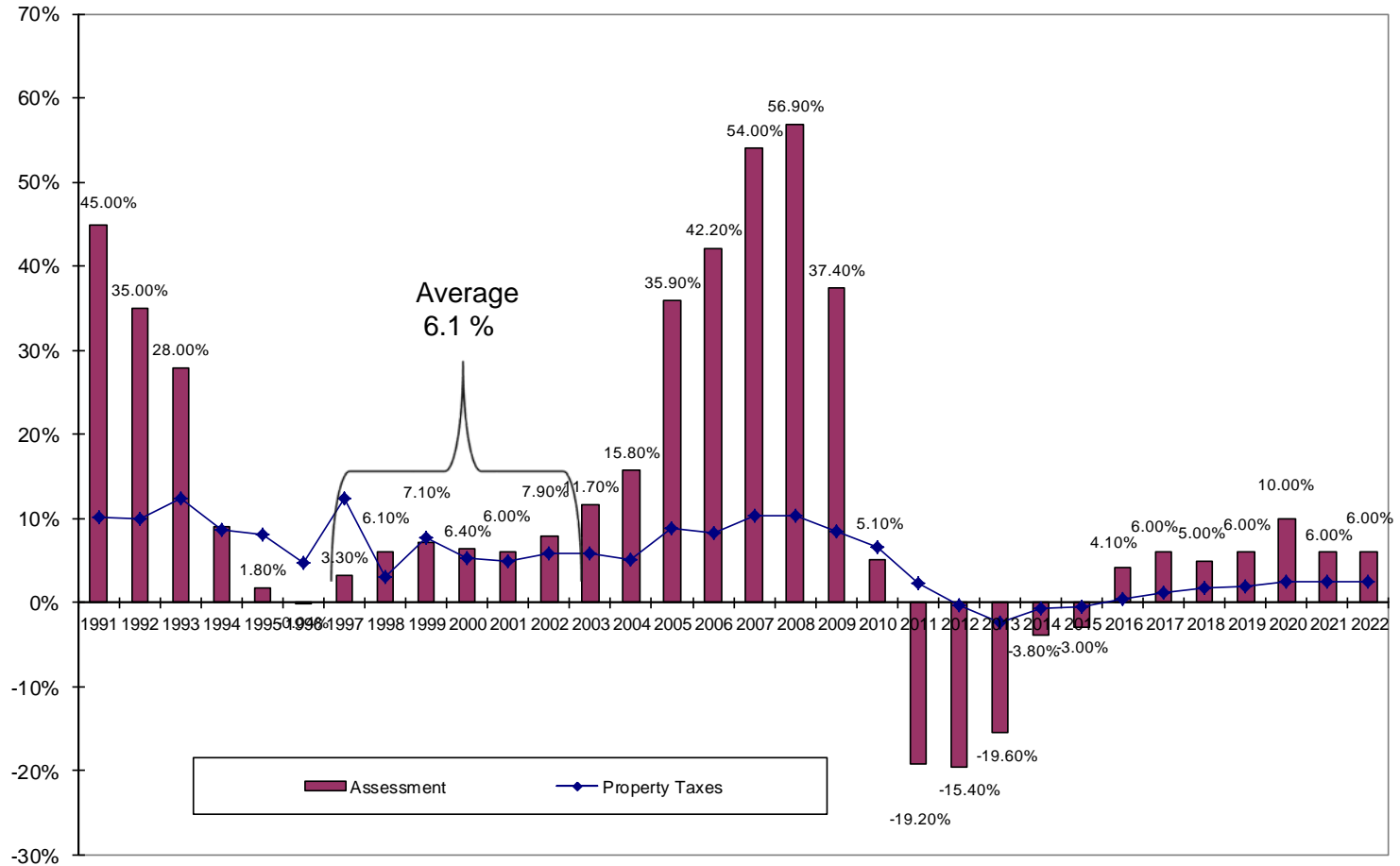
# Reassessment History



# Reassessment History

	FY 10	FY 11	FY 12	FY 13	FY 14	FY 15	FY 16
<b>Group 1 – South Carroll</b>	<b>(19.2%)</b>	0.0%	0.0%	<b>(3.8%)</b>	0.0%	0.0%	<b>2.0%</b>
<b>Group 2 – North Carroll</b>	7.0%	<b>(19.6%)</b>	0.0%	0.0%	<b>(3.0%)</b>	0.0%	0.0%
<b>Group 3 – Westmin/ Taneytown</b>	1.7%	1.7%	<b>(15.4%)</b>	0.0%	0.0%	<b>1.4%</b>	1.4%
<b>Annual Growth</b>	<b>(1.5%)</b>	<b>(7.7%)</b>	<b>(4.9%)</b>	<b>(1.0%)</b>	<b>(1.3%)</b>	<b>0.6%</b>	<b>0.9%</b>

# Reassessment History and Projections







Where Does The Money Go?

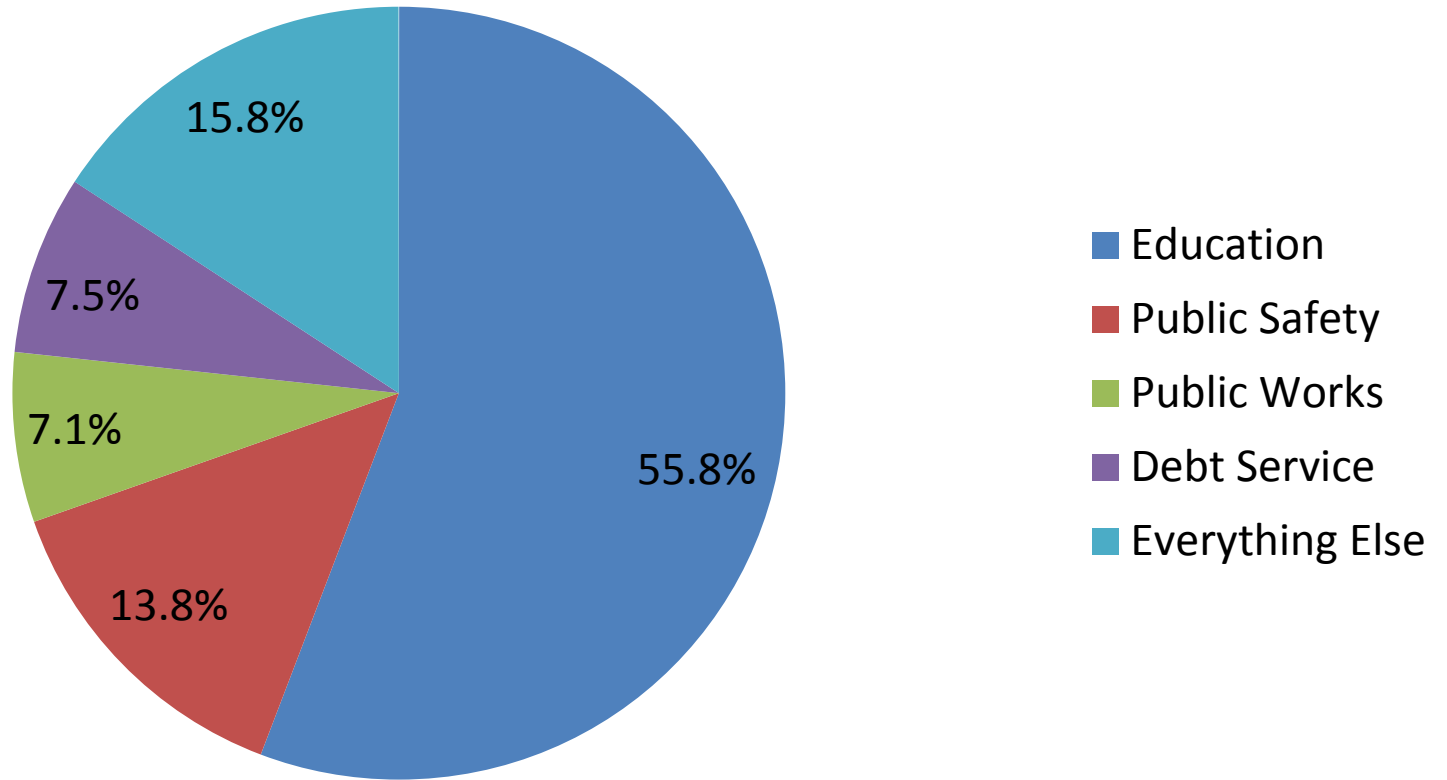
# State Mandates

- Autonomous in State law
  - Carroll County Public Schools
  - Carroll Community College
  - Carroll County Public Library
  - Election Board
- State departments
  - Health Department
  - Assessments and Taxation
- Elected Officials
  - Sheriff
  - State's Attorney
  - Circuit Court
  - Board of Education

# Not Mandated, But...

- Debt service
- 911
- Fire and EMS
- Snow removal

# Where Does The Funding Go?



# Growth Rate Assumptions

Department/Agency	FY 18 Planned	FY 19 Planned	FY 20 Planned	FY 21 Planned	FY 22 Planned
Employee Health Costs	6.5%	7.0%	7.5%	8.0%	8.0%
Risk Management (Workers Comp)	5.0%	5.0%	5.0%	5.0%	5.0%
Retiree Health Costs	9.0%	9.0%	9.0%	9.0%	9.0%
Detention Center (Medical/Food)	4.0%	4.0%	4.0%	4.0%	4.0%
Sheriff Services Salary	4.0%	4.0%	4.0%	4.0%	4.0%
Independent Post-Audit	3.0%	3.0%	3.0%	3.0%	4.0%
Salary and General Operating	3.0%	3.0%	3.0%	3.0%	3.0%
Health Department	3.0%	3.0%	3.0%	3.0%	3.0%
Board of Education Funding	2.8%	0.8%	2.0%	4.5%	3.8%
Funding to Non-Profit Agencies	2.7%	4.0%	3.9%	3.8%	3.7%

# History of County Funding to CCPS

# History

- FY 90 45.6%
- FY 00 47.5%
- FY 10 47.3%
- FY 17 46.8%
- Low 44.0%
- High 50.9%
- Average 47.2%
- 3 years over 50%