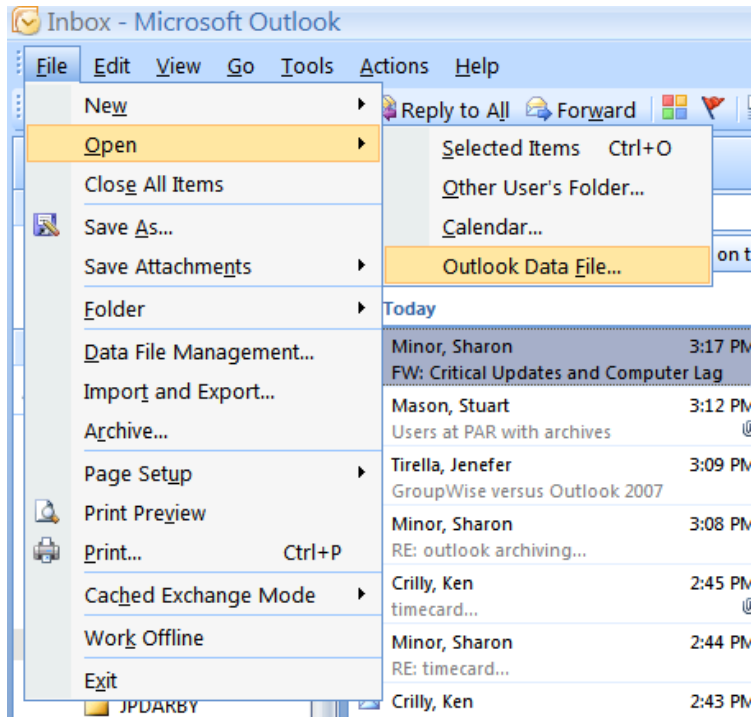
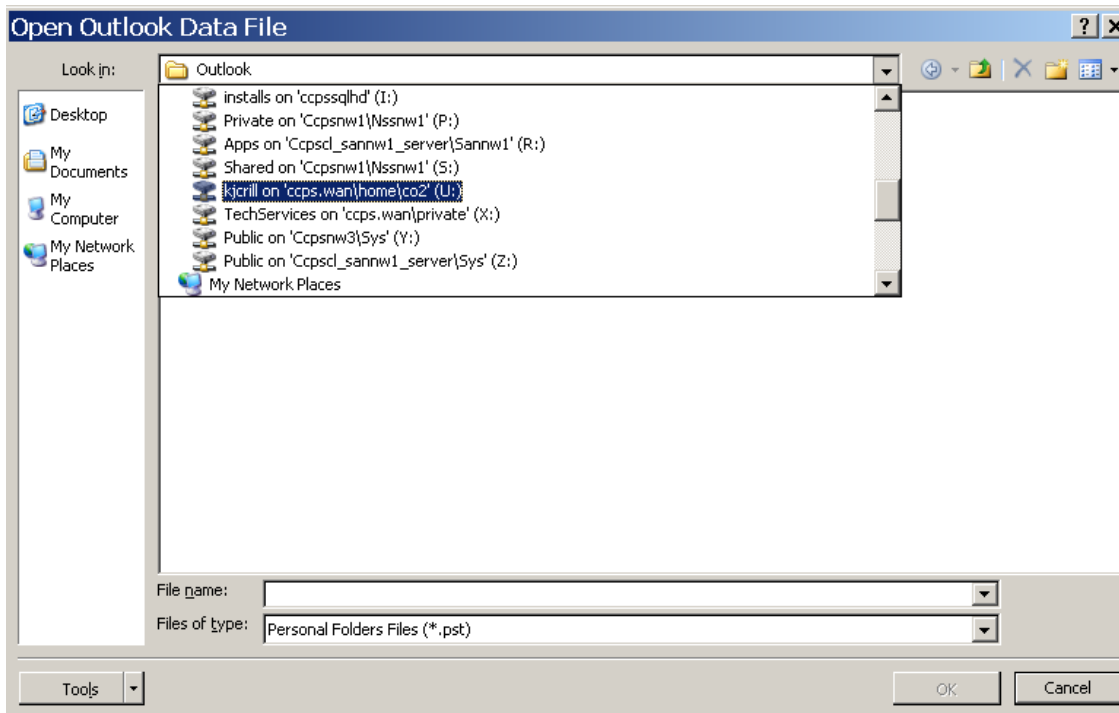


## *Open your Groupwise Archive that has been migrated to Exchange/Outlook*

1. In Outlook 2007, click File→Open→outlook data file



2. Then browse to your U: drive



3. Look for a file called "username.pst" (for example: kjcrill.pst) and open it.

4. You will see a new location in your folder list called “Personal Folders”—expand that and you will see your .PST/archive.

