



Elluminate Live set up Directions for V.10

Following these directions will enable you to successfully join an Elluminate Live session without difficulty. There are several steps that need to be taken and it is based upon the needs of the computer you will be using for the Elluminate Sessions. Most CCPS computers will have Java Web Start Installed.

Making Sure Java Web Start is installed...

Go to <https://www.illuminate.com/Support>

- Do you see this window?
- If it tells you that you do not have Java Web Start Web Installed follow the steps below to get Java.
- If it gives you an orange check and tells you **Congratulations** you can skip to Step Two.

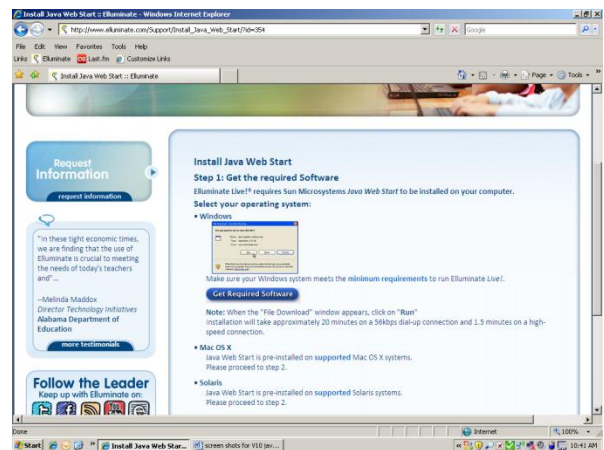


Step 1 Installing Java Web Start

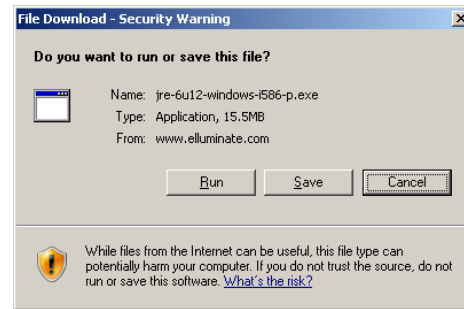
On the same window that tells you that you do not have the required software there is a link that states Download Required Software. Click that link to start the process.

- Depending on the computer you are using select the correct operating system and click the Get Required Software button to start the download.
- For CCPS computers you will select Windows.

A series of windows will walk you through the process.



- You will get this Security Warning. Click Run.
- This will take several minutes as it downloads the 16 MB installation package for Java Web Start.



- Once the download is complete you will get a second Security Warning. Click Run.
- Java will now be installed on your computer.



A series of Java windows will appear...

- Click Accept and the install will proceed. This may take a few minutes and will have a series of windows.



- Once the install is done you will get a window stating you have successfully installed the program. Click Finish.

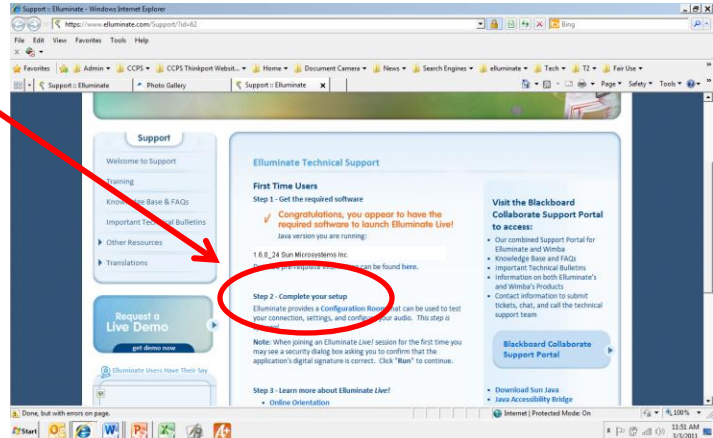


Now go back to the original support page <https://www.elluminate.com/Support> and the message should read **Congratulations** you have the needed software to run an Elluminate session. If not repeat the steps above.

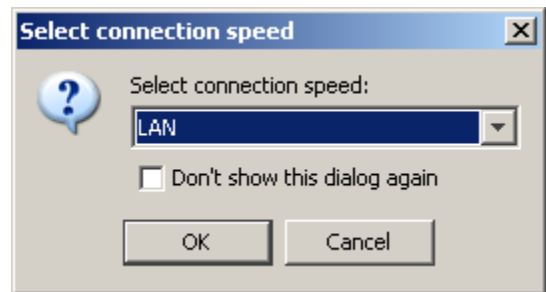
Go to Step 2...

Step 2 The Configuration Room

- To complete your setup you need to go to Step 2 and click on the link Configuration Room.
- This will open a room in Elluminate to have you test your headset/microphone to make sure all will work once you are in a Live room.

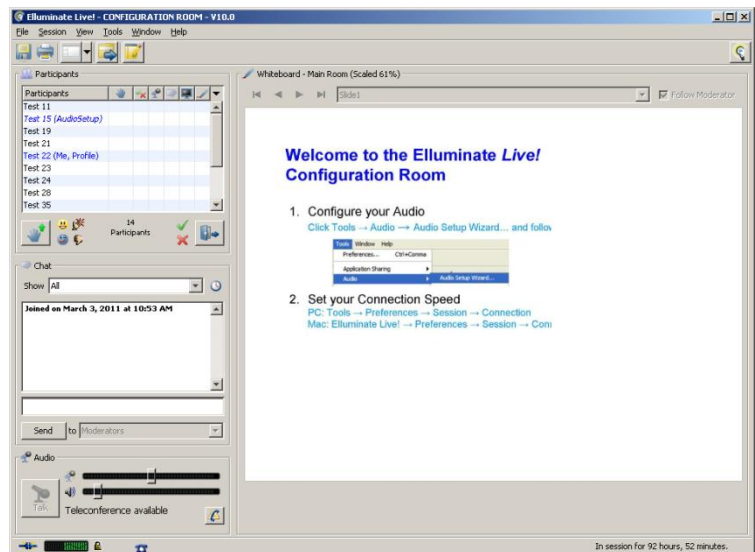


- You will see a series of windows including Java that will start and open the Elluminate room. You will get a message about connection speed. At a CCPS building select LAN. (At home select the correct connection speed from the drop down menu.)
- Click OK.



- Now you are in the room and will follow the on screen directions to configure your audio and microphone.
- Once you are done go to File and drag to select Exit and you are done.
- If you have trouble try these steps again and if that fails contact the person who is moderating the Elluminate session you are trying to attend.

****If you are using a USB headset try connecting the set before starting the computer.



Terry Holechek
Staff Development
Carroll County Public School
March 3, 2011