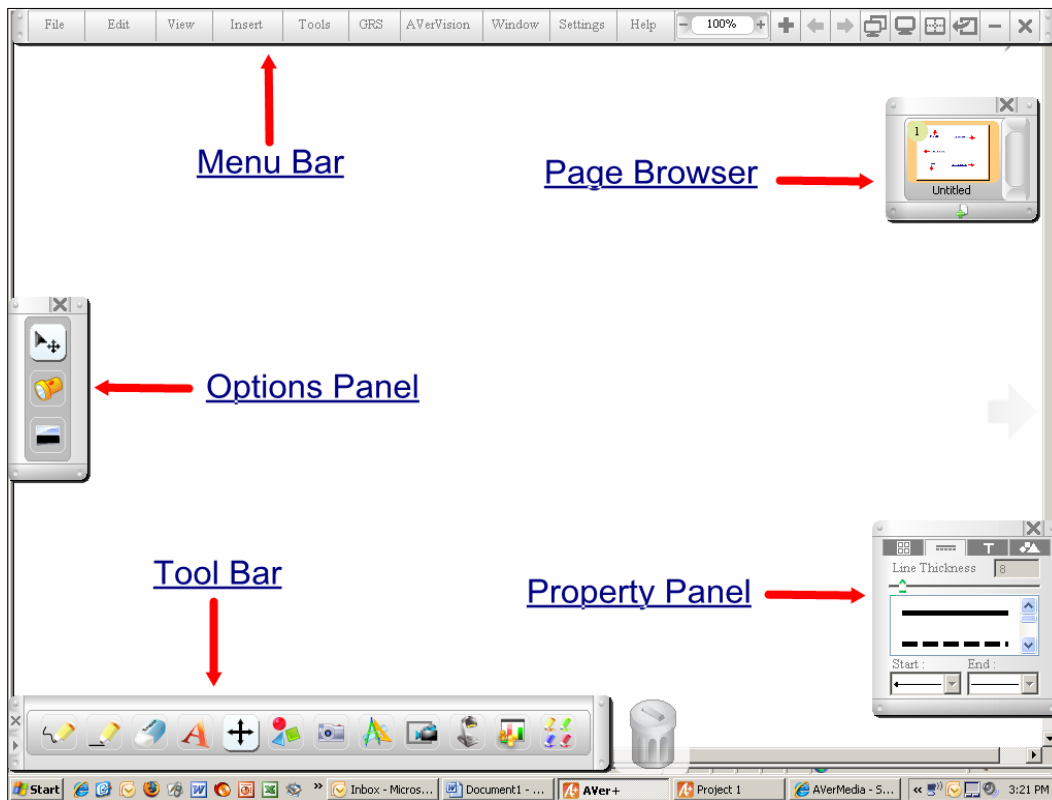
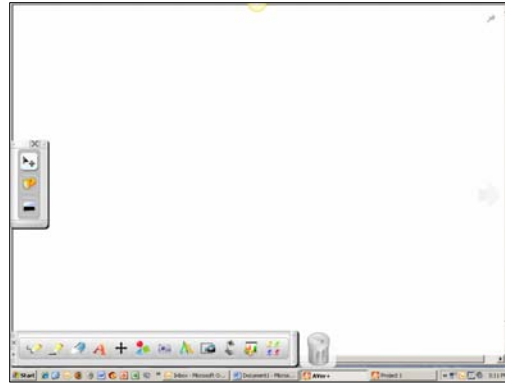


The Document Camera and the Aver+ Software...AverVision 300AF+



- Open the Aver+ Software on the desktop of your computer.
- The screen to the right is the default screen you'll see once you open the software.
- The screen below is showing all needed tool bars. To locate these go to the Menu Bar, find Windows and drag to select the needed tools.



***Helpful hints:

- The top menu bar appears only if you hover over top of it.
- If you double click on the white area of the page all the tools will disappear. To restore them double click again and they will return.

Tool Bar

****As you make different selections in the Tool Bar the Option and Property Panels will change to reflect your selection adding functionality.



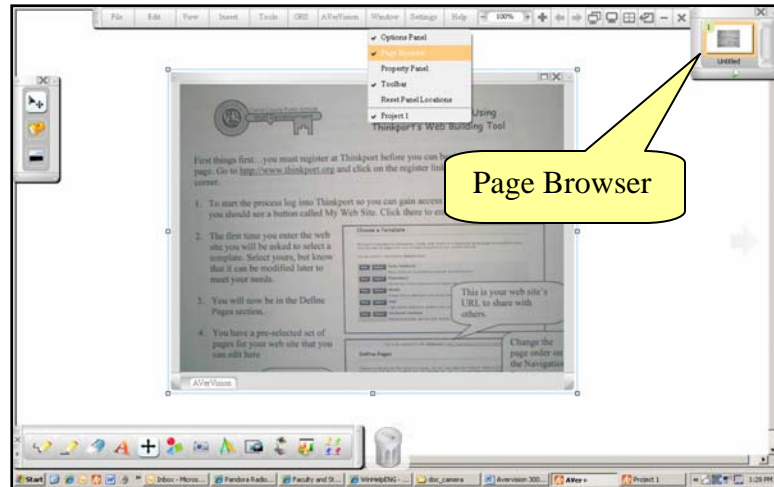
1. **Freehand** - change color and line thickness etc.
2. **Line** - lines, arrows and thickness
3. **Eraser** – erase small portions up to clearing entire page
4. **Text** – all formatting needs
5. **Move Tool** – the capability to move all that has been created on the page/pages. Also has a spotlight and screen visor feature here.
6. **Shape** – open and solid shapes
7. **Aver+ Capture** – single or multiple screen shots saved in a jpeg format. You will need to set up the save location before capturing data each time you start the Aver+ program.
8. **Special Tools** – math related tools like cubes, tan grams, timers and others. There are two virtual keyboards here as well.
9. **Aver+ Record** – records all actions and sound that take place on the computer and saves it as a video clip. You must select a save location and name before recording.
10. **Avervision Document Camera** – This is where you will find the controls for the camera like auto focus, freeze frame, zooms etc.
11. **GRS** (AverPen)
12. **Multiple Input** (AverPen)

****This is just an overview of the general tools and it is recommended that you explore all in greater detail before classroom use. Remember as you make tool selections the options and property panels will change to reflect those selections.

Page Browser

The Page browser is very useful when you need to go over your projects, switch from different pages, or re-arrange the order of the pages. You may also access some features in the context-sensitive menu and easily add a page by clicking on Insert Page at the bottom of the page browser panel.

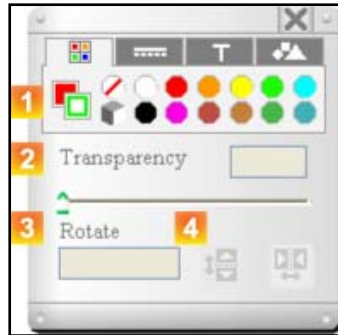
- The menu bar rolls up and you need to hover there to have the bar open.
- Click on Window and drag to select Page Browser and then it will appear in the upper right hand corner.
- Click on the + sign to add additional pages.




Property Panel

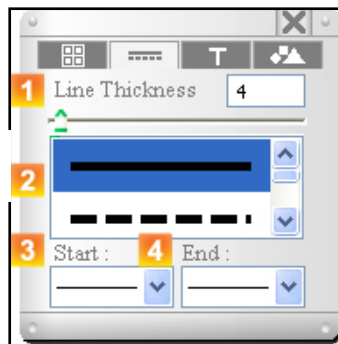
Property panel can edit the attribute of freehand, line, text and shape object(s) in the project.

View



1	Color palette	Change the outline and fill color of line and shape. To get more color selection, click  .
2	Transparency	Adjust the opacity of the line, shape and picture file.
3	Rotate	Rotate the object. Use the rotate wheel to turn the object in the direction you want.
4	Flip	Vertically or horizontally flip the object.

Line



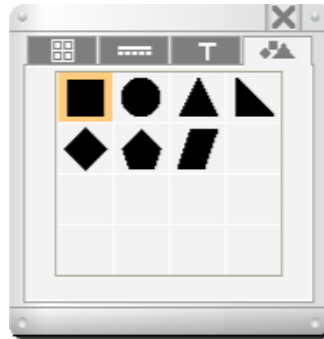
1	Line Thickness	Change the thickness of the line and outline of the shape.
2	Line Style	Change the style of the line and outline of the shape.
3	Start	Change the start point style of the line.
4	End	Change the end point style of the line.

Text



1	Font Style	Change font style
2	Font Format	Change the font to bold, italic, or underlined character.
3	Font Size	Change font size.

Shape



Use this panel to change the shape of polygon object.

Terry Holechek
Staff Development Facilitator
Carroll County Public Schools
January 4, 2011