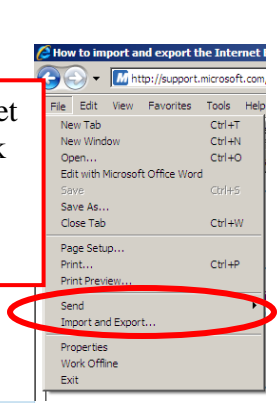
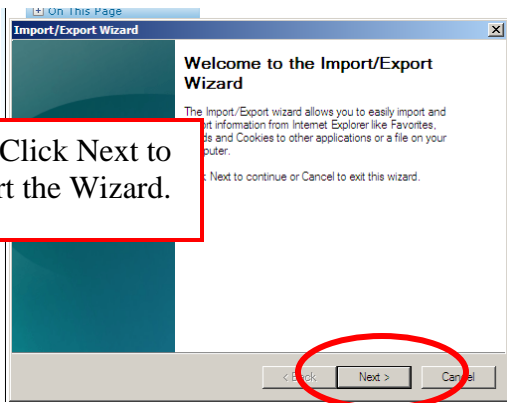


# Importing Your Favorites

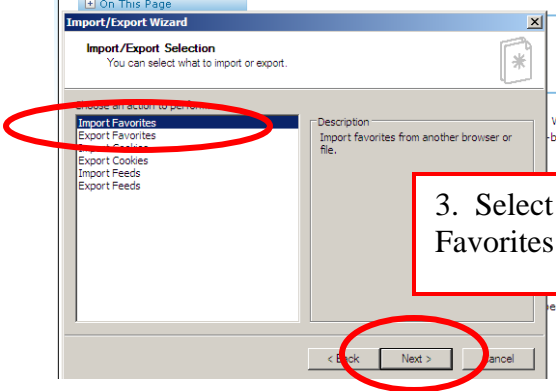
1. Open Internet Explorer. Click "File" then "Import and Export."



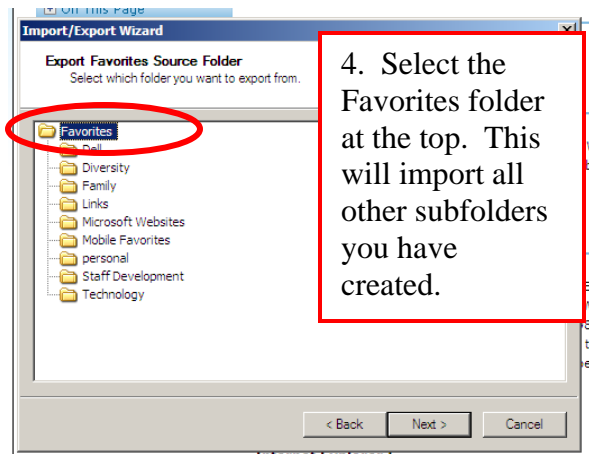
2. Click Next to start the Wizard.



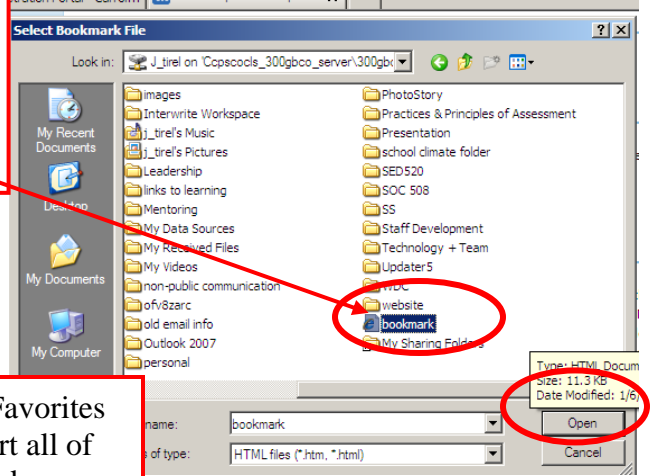
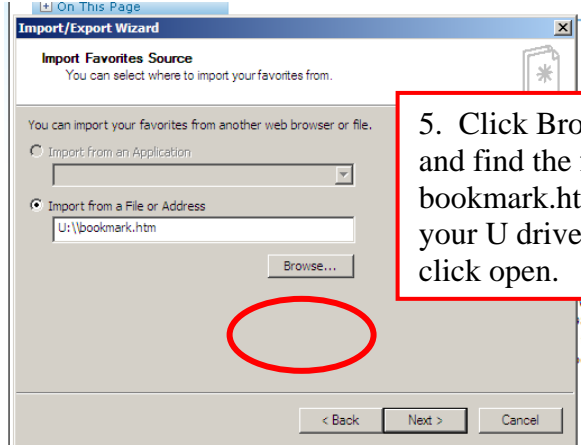
3. Select Import Favorites.



4. Select the Favorites folder at the top. This will import all other subfolders you have created.



5. Click Browse and find the file bookmark.htm in your U drive and click open.



6. Select Favorites to import all of your folders. Then click next.  
7. Click Finish and your favorites have now been imported into your internet explorer.

