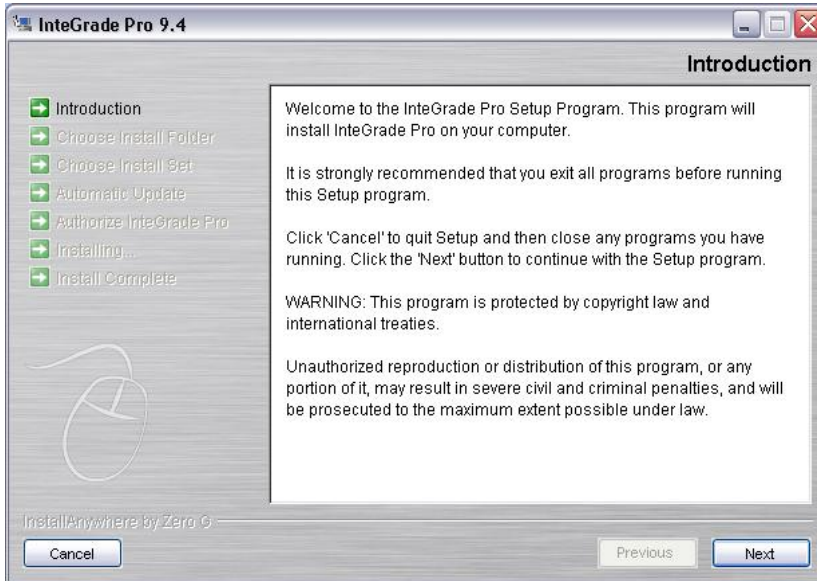


## How to install Integrate Pro (IGPRO)

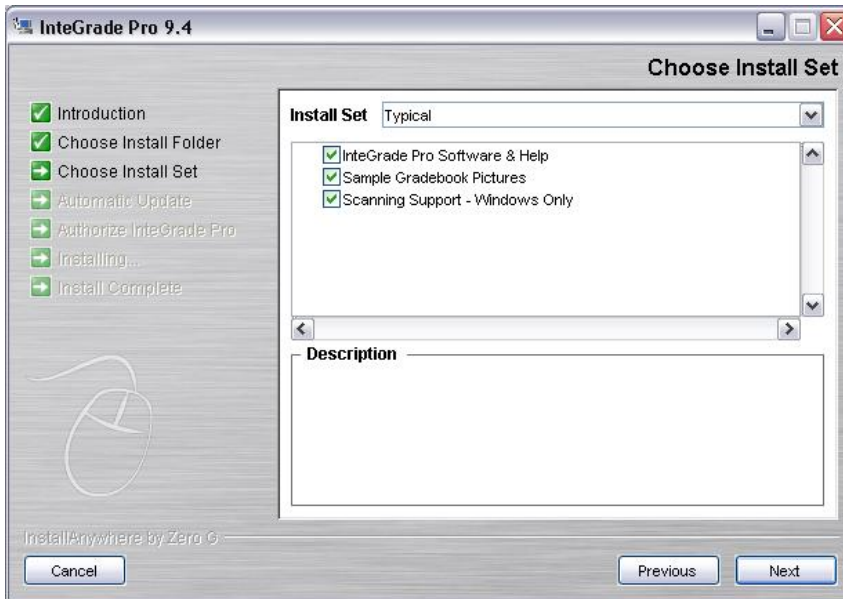
1. Browse out to the P: drive and locate the IGPRO\_Installer folder.
2. Within the IGPRO\_Installer folder is a file called "Install InteGrade Pro.exe" Double-click this file. This will begin the installation process.
3. Click "Next"



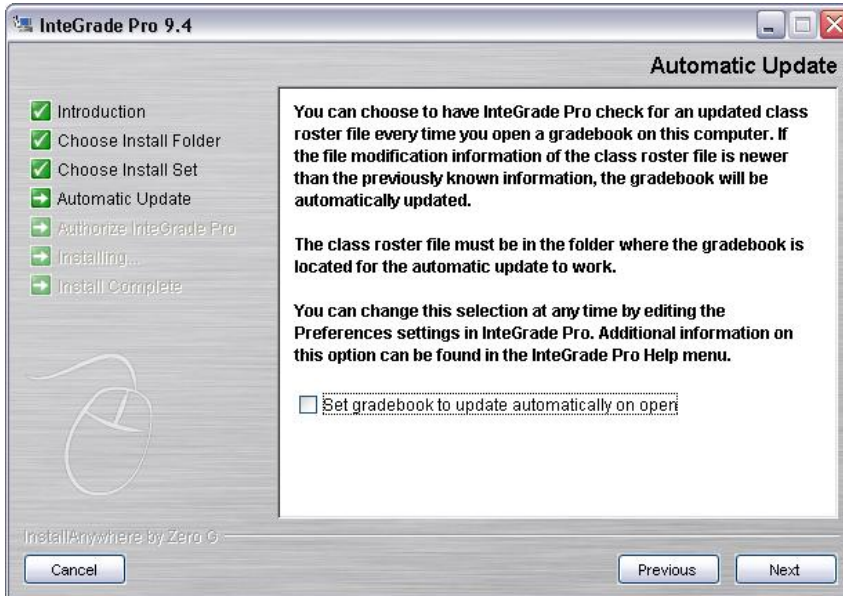
4. Click "Next"



5. Click "Next"



6. \*\*\*Check "Set Gradebook to update automatically on open", then click Next

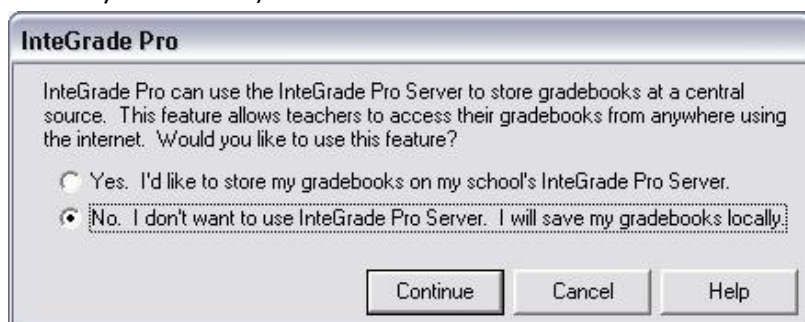


7. The InteGrade Pro License will pop up, click "Ok". Input the information located in the License\_info.txt file in the IGPRO\_Installer folder. It will look like the following screen FOR LHS ONLY. Once the information is entered, click Install.

This PDF will walk you through the steps to reinstall IGPro after your computer has be switched to Active Directory. Click here for this document.



8. Integrate Pro will then install on your computer. When it is finished, click Done.
9. **\*IMPORTANT\*** When you open IntegratePro for the first time, it will prompt you with the following screen. Make sure you select "No. I don't want to use InteGrade Pro Server. I will save my gradebooks locally." And click Continue. (This will allow you to open the gradebooks you have in your U: drive)



Congratulations! You've installed InteGrade Pro.

Go to the next page to connect to your old grade files...

Connecting to your data files...

1. Open IGPro
2. Click on the Open Grade book radio button and click OK.
3. Go to your U drive and locate your grade book file.
4. You will get a Connection Failure window and you'll need to click on the Browse button.
5. Browse to the P drive
6. Open the IGPro Data File
7. Double click on your school number.
8. Double click on your teacher number.
9. Double click on the .grd file.
10. You are finished.