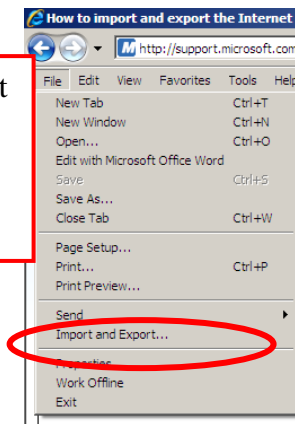
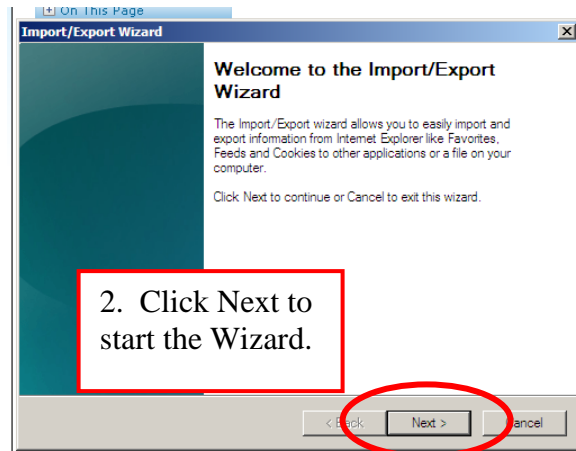


Exporting Your Favorites

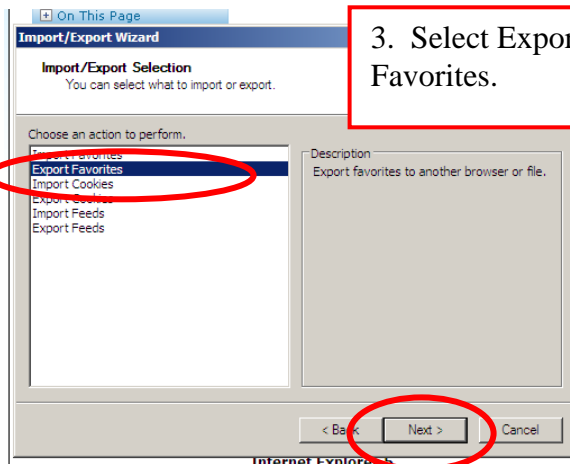
1. Open Internet Explorer. Click "File" then "Import and Export."



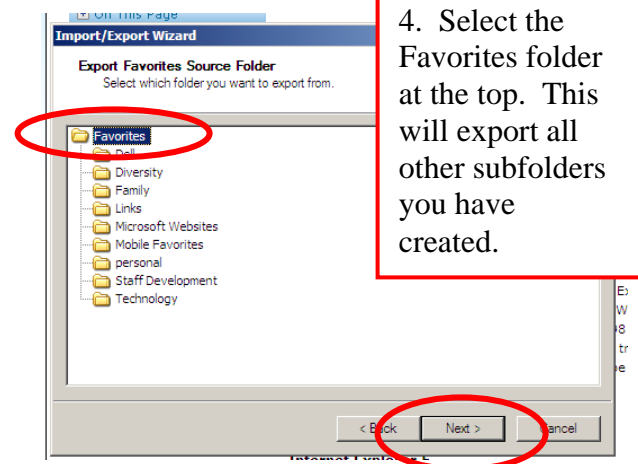
2. Click Next to start the Wizard.



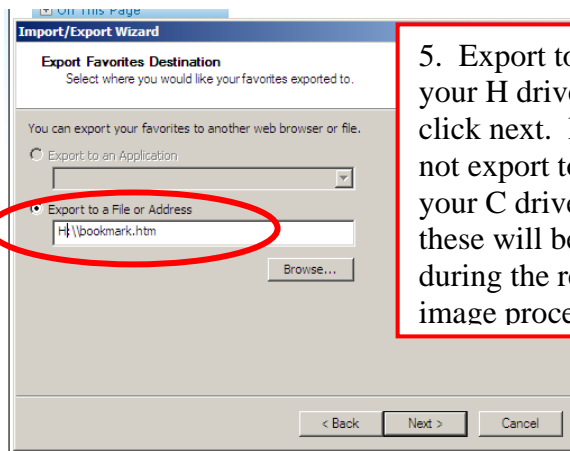
3. Select Export Favorites.



4. Select the Favorites folder at the top. This will export all other subfolders you have created.



5. Export to your H drive and click next. Do not export to your C drive as these will be lost during the re-image process.



6. If you see the above message, click yes. This will update your favorites folders. Then click Finish.

