



410-386-4570
FAX: 410-386-4579
www.carrollk12.org/sms/

August 2011

Principal's Message

Let me take this opportunity to welcome you to the **2011-2012** school year at Shiloh Middle School. Throughout the summer, the faculty and staff have been preparing new lessons, cleaning and modernizing the school, and beginning to get excited for **Tuesday, August 30th**, the first day of school for students. School will begin at **8:35** and end at **3:15**. Students will be permitted into the building at 8:15.

For all of our parents and students, you can find your homeroom and team number on the label attached to this newsletter. For all of our **6th Grade and New Students**, please plan on joining us on **Tuesday, August 23rd** from **2:30-4:00 OR 6:30-8:00** in the **Gymnasium** for our **6th Grade and New Student Orientation**. If possible, please try to come to the afternoon orientation to avoid any potential parking issues that may arise if everyone comes to the evening session.

While we are on the topic of dates, please mark **September 8th** on your calendars.

Meet the Teacher Night for 7th and 8th Grade Students will be held on **Thursday, September 8th at 7:00**. I highly encourage all parents to attend these events. Throughout the course of the evening you will have the opportunity to meet your child's teachers and hear about the content that will be covered in their classes.

Finally, on these nights we will be holding **Volunteer Trainings**. On **August 23rd**, **Volunteer Trainings** will be from **2:00-2:30 OR 6:00-6:30**. On **September 8**, Volunteer Training will be **6:30-7:00**. Remember, if you want to volunteer on a field trip, or help in the school in anyway, you must have completed the volunteer training.

As for getting involved, another way you can become part of your child's school community is by being a member of the Shiloh Middle School PTO. The **First PTO Meeting** of the year will be held on **September 12 at 7:00**. **Membership** in the PTO is **\$5.00**. I highly encourage you to become active in the Shiloh Middle School PTO. Your input at the meetings is not only encouraged, but needed to help our students meet their potential. **Membership drives** will take place at both the **New Student Orientation Night** and the **Meet the Teacher Night**. I look forward to seeing many of you at these meetings as we work together to continuously improve the education of the students of Shiloh Middle School.

Parents and students should be aware that students again will be using **Student Agenda Books**. These agenda books will help teach our students organizational

The mission of the Shiloh Middle School community is to create a rigorous academic program within a safe and respectful environment that empowers all students to reach their fullest potential.

Shiloh Middle School

The Wolf Trail



skills and aid them in planning for future projects, school events, etc. I encourage you to use these books with your child for both in school and out of school activities. This consistency will help our students achieve success during the upcoming school year. All students will receive their **First Agenda Book free** on the first day of school. **Replacement Agendas** will be available for **\$5.00**. Along with our student agenda books, all students will be required to wear **Physical Education Uniforms** during their P.E. classes. These uniforms will be **available for purchase** the first week of school. The **cost** of these uniforms is **\$20.00**.

To meet the requirements of No Child Left Behind, all students in middle school will continue to take the **Maryland School Assessments (MSA's)**. This year, students will take this test in March. More details on the MSA's will be coming in future newsletters, or you can access the following website www.mdk12.org. As you navigate through the website, you will be able to see what the MSA tests, how it is scored, and how Shiloh Middle School has performed.

Please take time to review the remainder of this first newsletter. You will find more information on topics such as school lunch menu, specific PTO information, Free and Reduced Lunch Information, and other policies and procedures. Of specific importance are the policies dealing with medications and dress code:

Dress Code: New CCPS Requirement... Dresses, skirts, skorts, and shorts should not be excessively short. The new guideline for **"excessively short"** is **clothing that does not reach the student's fingertips when the student is standing with arms extended at the side**. Pants will cover undergarments at all times and not be excessively long as to drag on the floor. **Please keep this in mind when shopping for your child's clothing**. Students in violation of the dress code will be asked to change into clothing that meets the dress code.

Medications: A reminder that **ALL medications must have a Doctor's Order AND Parent Permission for the medication to be administered in school**. Ibuprofen (Advil) and Acetaminophen (Tylenol) are the only medications that do not need Doctor's Order BUT MUST HAVE Parent Note. **Also note, that ALL medications must be transported to and from school by an adult**. Unauthorized transport of medication by a student is a violation of the drug policy.

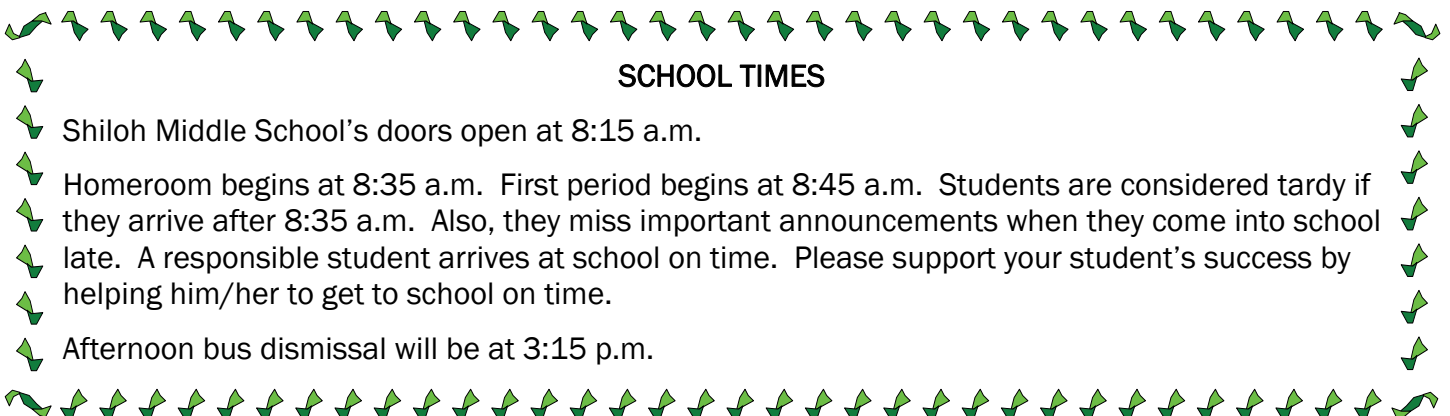
Please review these and all other policies within this newsletter with your child.

Finally, I am pleased to announce that Shiloh Middle School will be using the **Home Access Center** and **AlertNow** as avenues to communicate with parents. These resources will allow you to receive information regarding grades, attendance, emergency closing of school, school lunch menus, PTO Updates, calendar dates, and many other informational items. Although the entire newsletter will not be posted on this website, many of you may find these resources very valuable. Please see the fliers within this newsletter for further information. I highly encourage you to take the time needed to enroll to receive both of these extremely valuable resources.

As always, if I, or any of the staff at Shiloh Middle School can be of assistance to you, please contact us.

Best regards,

Jeffrey J. Alisauckas
Principal



SCHOOL TIMES

- Shiloh Middle School's doors open at 8:15 a.m.
- Homeroom begins at 8:35 a.m. First period begins at 8:45 a.m. Students are considered tardy if they arrive after 8:35 a.m. Also, they miss important announcements when they come into school late. A responsible student arrives at school on time. Please support your student's success by helping him/her to get to school on time.
- Afternoon bus dismissal will be at 3:15 p.m.

DRESS CODE

Students of Carroll County Public Schools are required to groom themselves in a manner that is modest, clean, appropriate, decent, and not disruptive to the educational process. Students are expected to abide by this dress code from their arrival to the school building to the defined ending of the school day. The requirements include, but are not limited to:

Definitions:

Cleavage Area: An area between the breasts exposed by a low-cut neckline

Skorts: Shorts with a skirt-like overlay

Midriff Area: An area between the chest and the abdomen

Head Coverings:

- Hats, sunglasses, or head coverings of any kind, including bandanas and visors, shall not be worn in the school building unless approved for religious or medical reasons. Certain headbands, scrunchies, etc. which are used to hold hair in place and do not cover the entire head are permitted.

Shirts: *Shirts shall:*

- Cover the entire back (i.e., no cutout backs, no shirts that tie in back).
- Cover the midriff area (bottom of the shirt must meet the top of the lower attire at all times).
- Cover undergarments (tank-top undershirts and skin-tight compression shirts are considered undergarments, and must have a shirt over them).
- Not be see-through.
- Fit modestly so that cleavage area is covered.
- Have two straps, one on each shoulder (no tube tops or halter tops).

Dresses/Shorts/Skirts/Skorts/Pants:

- Dresses, skirts, skorts, and shorts should not be excessively short. The guideline for “excessively short” is clothing that does not reach the student’s fingertips when the student is standing with arms extended at the side. Pants will cover undergarments at all times and not be excessively long as to drag on the floor.

Other:

- No shoes with wheels shall be worn.
- No bedroom slippers or pajamas shall be worn.
- No chains which could inflict significant bodily harm if used as weapon, spiked clothing or accessories shall be worn.
- No mutilated, cutout or ragged clothing shall be worn that exposes the bare skin between the upper chest and mid-thigh or creates a significant distraction.
- Underwear shall not be showing and shall not be worn as outerwear.
- Clothing shall not convey advertisements for or promote the use of condoms or other birth control devices, tobacco, alcohol, drugs, or weapons, stated or implied.
- Clothing shall not convey messages that express hate, racial slurs, or sexual harassment.
- Clothing shall not convey establishments or products whose names can be directly interpreted or construed as carrying a “double meaning” involving sexual innuendo, gang symbols, or sexual activity.

Violations

A student found wearing inappropriate clothing will be asked to change or remove the item, and will be given an opportunity to do so. Should the student not be able to change or remove the item, clothing may be provided by the individual school. All student dress code violations will be addressed in a respectful manner. Student failure to cooperate will be referred to an administrator. Any student not complying with the direction of the administrator may be considered insubordinate and subject to appropriate disciplinary action.

Calendar of Events

AUGUST

2	Board of Education Meeting, 5:00 P.M., 125 N Court Street, Room 007
23	Grade 6 and new Grades 7– 8 Orientation, Session one 2:30 p.m.-4:00 p.m., Session two 6:30 p.m.-8:00 p.m., gym (Volunteer Training at 2:00 pm and 6:00 pm)
24	Board of Education Meeting, 1:00 P.M., 125 N Court Street, Room 007
30	FIRST DAY OF SCHOOL

SEPTEMBER

5	SCHOOL CLOSED—LABOR DAY HOLIDAY
8	Back to School Night, 7:00 P.M., gym (7th & 8th Grade) Volunteer Training 6:30 p.m.
9	Back to School Dance
12	PTO Meeting 7:00 p.m.
13	SCHOOL PICTURES
14	Board of Education Meeting, 5:00 P.M., 125 N Court Street, Room 007
16	CLOTHING ORDER DEADLINE
21	Preview Family Living Video Night (for all grades), 6:30 P.M.
29	SCHOOL CLOSED-ROSH HASHANAH

VISITOR PASSES

Because we at Shiloh Middle School are committed to providing a safe environment for our students, we will adhere to the Carroll County "Visitor Badge" policy. You are welcome to visit the school at any time, but we ask that you always enter through the front doors and stop at the main office first. There you will be asked to sign in, and we will issue you a "Visitors Badge" that will identify you for students and staff as having permission to be inside the school. Since we have a great number of parent volunteers, it is impossible for us to recognize everyone. Therefore, your cooperation with this policy is much appreciated.

Are you missing out?

A child's attendance at school is very important. When your children are absent from school they miss valuable classroom instruction. As a school, we do not encourage family vacations during the school year. We do understand that students may become ill and may be absent. **We ask that you call school by 9:00 a.m. to let us know your child will be absent.** Shiloh Middle will accept a written note, email, facsimile or phone call from a parent or legal guardian to verify a student absence. When verifying your child's absence you will be required to state the full name, grade/team, dates of absence, reason for the absence and a phone number where you may be contacted. Please note that Shiloh may need to call to verify authenticity of a phone call, email or fax.

Failure to verify a student's absence as a lawful reason in a timely manner will result in the absence being considered unlawful. Thank you for your help in verifying your child's absence in a timely manner.

Written Note: Send to school with your child

Fax: 410-386-4579

Email: smsattendance@carrollk12.org

Phone: 410-386-4570

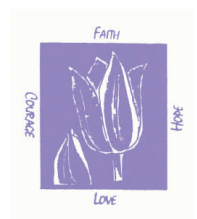


Also, due to the high number of absences per day, we will ask teachers to gather work for your child only if he or she is to be absent from school for three days or more.

Cancer Support Group for Middle & High School Students

Endorsed by Carroll County Public Schools

Cancer Support Group for Middle & High School Students



- * Focus is on dealing with the physical and emotional challenges facing patients coping with cancer.
- * The stresses experienced by caregivers in meeting patient's needs, as well as their own.
- * Support working through the grieving process.

Beginning Monday, September 19, 2011, the Baltimore Cancer Support Group, Inc. (BCSG), will start a group for middle and high school students whose lives have been touched by a family member or friend with cancer. The group will meet throughout the 2011 – 2012 school-year and during the summer of 2012. There are no costs or fees for participation, and snacks are provided. Students may attend sessions as often as needed, and all information is kept confidential.

Trained facilitators from the medical field as well as cancer survivors lead each session. Meetings include icebreakers, activities, educational lessons, speakers, and video clips from the Livestrong Foundation. Meeting times are from 7 p.m. until 8:30 p.m. at the Westminster United Methodist Church on the corner of Main and Center Streets in Westminster, Maryland.

For additional information, please call BCSG at 410-668-1762 or send an email to Karenaughey@baltimorecancersupportgroup.org.

Volunteers – Carroll County Public Schools 2011-2012

Making A Difference Together



Volunteering is an excellent way for parents and family, community members, and business partners to build and strengthen ties with the Carroll County Public School System. Volunteers offer their time, effort, and/or talents to benefit all students in the school system.

CCPS Volunteer Program Guidelines outline consistent standards for volunteers. **Level I Volunteers** (guest readers, concession stand operators, business representatives, event ticket collectors, guest speakers, etc.) **must annually register at a school by completing a Volunteer Information Form.** **Level II Volunteers** (classroom helpers, tutors, chaperones, mentors, etc.) **are required to attend an annual training session at least seven (7) school days prior to volunteering.** *School days are defined as days when schools are open for students.*

Volunteer training sessions are held at schools and regional locations throughout the school year. **Volunteer training, obtained during the 2010-2011 school year, is only valid through September 30, 2011.** As plans for the 2011-2012 school year are developed, volunteer training may be included as part of a scheduled school event or planned as a separate activity. Carefully scan school newsletters and bulletins for scheduled volunteer training dates and locations. **Attending required annual volunteer training prior to October 1, 2011 will maintain your eligibility to volunteer and alleviate gaps in your volunteer service.** By late summer, a comprehensive list of volunteer training sessions will be available by accessing the CCPS website (www.carrollk12.org), Channel 21, and local newspapers. Additional information may also be obtained by contacting Jane Farver, CCPS Volunteer Program Coordinator, at 410-386-1536 or ejfarve@k12.carr.org.

We applaud the efforts our dedicated volunteers during the 2010-2011 school year. Through their willingness to donate service, countless educational endeavors became realities for CCPS students and staff!

TBA, Volunteer Training Coordinator



WE WANT YOU... TO JOIN OUR CLASSROOM

Yes, we want YOU as a volunteer! How can you help, you ask? Maybe you can see yourself as a resource person sharing skills, talents and materials on a one time basis. How about helping with clerical work or putting things together at home?

Whatever abilities and interests you care to share in our volunteer program, we can almost guarantee a place for you.

Enclosed in this newsletter is a volunteer check list. Please look over it carefully and check off any areas where you can help. You will be contacted as soon as possible.

Parent volunteers help to make the difference between a mediocre and great school. Call the school if you have any questions.

Again, please make sure you get your Volunteer Training early. We need and appreciate your help!

Dear Parents and Students:

My staff and I want to welcome you to our beautiful cafeteria at Shiloh Middle. Our team is looking forward to serving nutritious, tasty and attractive lunches that meet M.S.D.A. standards and to receiving your input on food choices that are interesting to you.

Two entrees will be offered daily, and, as we get to know your likes, other options will be available.

Regular Student Lunch	\$2.25	Cookies or Brownies	\$.35
Milk or Juice	\$.50	Bottled Water	\$1.00
Ice Cream & Snacks	\$.75		
Student Breakfast	\$1.50		

Three meal plans are offered:

1. ANNUAL MEAL PLAN—GREAT SAVINGS! (See explanation in this newsletter)
2. Prepaid lunches—purchase the number of lunches desired in any multiples of \$2.25.
Example: 10 lunches at \$22.50; 15 lunches at \$33.75; 20 lunches at \$45.00, etc.
3. NEW INSTALLMENT PAYMENT PLAN (See explanation in this newsletter)

Need to borrow lunch money? Go to the main office to pick up your lunch charge slip. Present charge slip to staff member at the cash register in the cafeteria. **Repayment is due the next day to the office.** Prompt payment is important.

Any questions regarding our programs or menu selections please feel free to call me during school hours.

Your cafeteria manager,
Patty Therit
And team
Nancy Lynch, Vicky Lafferty, Lynn Bonner

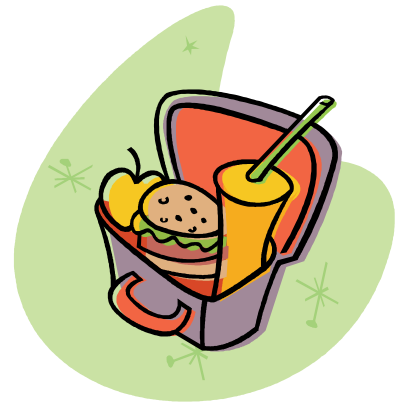
FORGOT YOUR LUNCH?

No problem! Simply fill out this form and send into our cafeteria. You can purchase any number of school lunches ahead of time. It's a great way to reassure your child that lunch will be here even if they left their lunch box on the kitchen table.

Student Name: _____

Grade _____

_____ X \$2.25 = _____
lunches Amount



Note: Checks should be made out to Shiloh Middle School Cafeteria.

**CARROLL COUNTY PUBLIC SCHOOL MEAL PLANS
2011 –2012 School Year**

GREAT NEWS – Lunch prices will remain the same for the 2011-2012 school year.

Two different meal plans will be available to students for the 2011-2012 school year. We encourage you to choose the plan that is most convenient for you. In addition to these plans, daily payment is always available. These plans are a convenient, simple way to ensure that your child will be eating a well-balanced, nutritious school lunch every day.

ANNUAL MEAL PLAN

Using this plan, parents can pay for their child's lunch in a one-time payment for the entire school year. We accept Visa, MasterCard, Money Order, Cash or Personal Check. The cost for a full year starting August 30, 2011:

Lunch:

Elementary	\$340.00*
Middle & High (Regular)	\$382.50*
High School (Super)	\$467.50*

* Reflects a 10 meal discount.

Breakfast - Only available at schools serving breakfast:

Elementary	\$206.25*
Middle & High	\$247.50*

*Reflects a 15 meal discount.

If your child attends a field trip please notify the cafeteria manager one (1) day prior to the event and a bagged lunch will be provided.

To enroll your child by cash, check or money order: complete an enclosed enrollment form (titled **Annual Meal Plan**) for each participating child. Check and money orders should be made payable to Carroll County Public Schools. Remit to CCPS, Food Service Department, 125 N. Court Street, Westminster, MD 21157. **(Please do not send to your child's school)**

To enroll your child using a VISA or MasterCard: call 410-751-3040 or 410-751-3087 between 8:00 AM and 4:00 PM Monday through Friday, beginning July 5, 2011.

If you would like to have your child's plan in effect for the first day of school, we recommend that you order prior to August 26, 2011. Please note there are no refunds on this plan unless your child moves outside the CCPS system.

INSTALLMENT PAYMENT PLAN

Using this plan, parents can pay for their child's lunch through an easy direct debit from a checking or savings account. Payments will be withdrawn in equal monthly installments on the 20th of each month, August thru April.

The monthly installment is as follows:

Lunch:

Elementary	\$40.00/month
Middle & High (Regular)	\$45.00/month
High School (Super)	\$55.00/month

Breakfast - Only available at schools serving breakfast:

Elementary	\$25.00/month
Middle & High	\$30.00/month

If your child attends a field trip please notify the cafeteria manager one (1) day prior to the event and a bagged lunch will be provided.

Installments are debited on the 20th of each month and cover meals to be served starting on the first day of the Subsequent month. Enrollment forms must be received by the 15th of the month to secure your child's start date on the 1st day of the subsequent month. Applications received after the 15th will be processed on the 20th of the following month. If your bank rejects a debit twice, this plan will no longer be available to the student.

To enroll your child in this plan, complete the enclosed forms: **Installment Meal Plan Student Enrollment Form & Installment Meal Plan Authorization Agreement.**

Remit the original signed forms with a voided check to: CCPS, Food Service Department, 125 N Court St. Westminster, MD 21157

Please note there are no refunds on this plan unless your child moves outside the CCPS system.

We would like to thank you for your past participation in the Food Service Program, either through daily payment or one of our meal plans. If you have not been a past participant, please consider the options we are offering. We look forward to serving you again this year and hope that the "Lunch Program" will be a positive experience.

**ANNUAL MEAL PLAN
STUDENT ENROLLMENT FORM
(One per child)**

Child's Name: _____

School/Grade: _____

Breakfast: (/ Selection)

Elementary - \$206.25 _____

Middle & High - \$247.50 _____

available only at breakfast
serving schools)

Lunch: (/ Selection)

Elementary - \$340.00 _____

Middle & High (Reg.) - \$382.50 _____

High School (Super) - \$467.50 _____

Parent's Name: _____

Address: _____

Telephone #: _____

Payment Type (Select one):

Cash/Money Order _____

Check _____

Credit Card:

Visa _____ or Mastercard _____

Account # _____ - _____ - _____ - _____

Expiration Date ____/____/____

3 Digit Security Code ____ ____ ____
(last three digits located on back of card)

Remit to:

**Carroll County Public Schools
Food Service Department
125 N. Court Street
Westminster, MD 21157**

Thank you for your participation in our meal plan program

**INSTALLMENT MEAL PLAN
STUDENT ENROLLMENT FORM
(One per child)**

Child's Name: _____

School/Grade: _____

Breakfast: (✓ Selection)

Elementary - \$25.00/mo. _____

Middle & High - \$30.00/mo. _____

(Available only at breakfast
serving schools)

Lunch: (✓ Selection)

Elementary - \$40.00 _____

Middle & High (Reg.) - \$45.00 _____

High School (Super) - \$55.00 _____

Parent's Name: _____

Address: _____

Telephone #: _____

PLEASE ATTACH A VOIDED CHECK

**Remit to:
Carroll County Public Schools
Food Service Department
125 N. Court Street
Westminster, MD 21157**

Thank you for your participation in our meal plan program

STUDENT AGENDAS

If a student plans to learn, he must first learn to plan. To help him/her do this the Shiloh PTO provides each student with a student agenda. The student agenda is a booklet containing four major sections: a school handbook, academic rules such as grammar and punctuation guidelines, a long range calendar for the entire school year and a daily planning guide. As each teacher concludes a lesson, he or she will include time for students to write the assignments in the agenda. Students will then be required to take the agenda home along with the study materials (textbook, etc.) for each evening. Thus, a student will have a written record of what is to be done for each class for the next day. We hope that agendas will help students to feel better about themselves and school by assisting them with planning for success. Ask your child to review the student agenda with you during the first week of school, and if you want to know what work is to be done ask your student to review it with you each night.

Emergency Cards

It is necessary for us to have the emergency cards signed and all information completed in order that we may carry out your wishes in case of an emergency. Please complete the appropriate part on the front of the emergency card to indicate anyone who has your permission to pick your child up from school.

Students are not released to anyone other than a parent unless his/her name is indicated on the emergency card.

WALKERS AND PARENT PICK-UP

Students who walk or who are picked up from school by parents **will not be dismissed until 3:25 PM.** We have set this dismissal time for the safety of the walkers and to facilitate first bus wave departure. Your cooperation in adhering to this time is greatly appreciated.

Important Information

Please remember to send your child into school with notes for early dismissal, change in bus/parent pick-up. This becomes very disruptive to the classrooms if a note is not sent in prior to the student leaving for the day.

PARENT DROP-OFF AND PICK-UP



In order to insure the safety of our students, we have located our parent drop-off and pick-up area **DURING THE MORNING FROM 8:15 AM UNTIL 8:35 AM AND DURING THE AFTERNOON FROM 3:00 PM UNTIL 3:30 PM ONLY** as follows. Parents transporting students to school should turn into the side parking lot. They should discharge or pick up students at the end door to the building.

PARENTS SHOULD NOT ENTER THE FRONT BUS LOT OR PULL UP IN FRONT OF THE MAIN ENTRANCE TO THE SCHOOL TO PICK UP OR DISCHARGE STUDENTS DURING THE ABOVE TIMES.

If you must drop off students **before 8:15 AM** or pick them up **before 3:00 PM** or **after 3:30 PM**, you may use the main entrance to the school.

Please exit the side parking lot with care as school buses will be using the main driveway in the morning and afternoon.

We want to thank all parents and students for your help in making the busy morning arrival and afternoon departure times as safe as possible.

**CARROLL COUNTY PUBLIC SCHOOLS
NOTICE OF NON-DISCRIMINATION**

The Carroll County Public Schools (CCPS) does not discriminate on the basis of race, color, ancestry or national origin, religion, sex, disability, or age in its programs and activities. The CCPS provides nondiscriminatory access to school facilities in accordance with its policies and regulations regarding the community use of schools (including, but not limited to, the Boy Scouts). The following person has been designated to handle inquiries regarding the non-discrimination policies:

Gregory J. Bricca
Director of Research and Accountability
125 North Court Street
Westminster, Maryland 21157
410.751.3068

CONSENT AND RELEASE

Permission to Photograph, Videotape or Audiotape

Throughout the school year, the Carroll County Public School System frequently covers school activities and may use your child's photograph, video image, or voice for educational, informational, or public relations purposes, with or without identification by name.

If you do not wish to have your child's voice reproduced on tape or to have his/her image appear in such things as a video, a photograph, or the school website, please notify the school principal in writing. It is assumed that parents and guardians consent to their children being audiotaped, photographed, videotaped, or having their image placed on a school website by the school system unless such notification is received.



There are also occasions when the media cover certain school events (such as when a government leader visits a school). If you do not wish to have your child's name or likeness published by the media, you should address your concerns directly to the school involved so that the media is so advised. Please be advised that the school system has no control over the media when they are covering activities such as sporting events and musical programs that are open to the public.

Use of Student Work on Websites or in Publications

There may be times throughout the year when the Carroll County Public School System wishes to display student work on school websites or in publications. If you do not wish to have your child's art, poetry, writing, etc. appear on school websites or in publications, please notify the school principal in writing. It is assumed that parents and guardians consent to their child's work being displayed on school websites or in publications unless such notification is received.

7/8/09

MISSION

The mission of Carroll County Public Schools is to ensure that every student can thrive as a responsible citizen in a changing world by providing rigorous and challenging curriculum in partnership with quality staff, caring parents, and supportive community members.

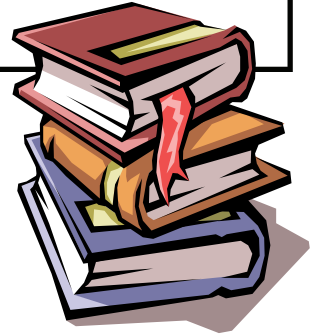
SHILOH TAKE HOME FOLDERS

Shiloh Middle School would like to thank the following businesses for sponsoring the book covers and folders for our students.

Sherri R. Campeggi, Coldwell Banker
Rhonda J. Knickman, Lizzie's Lockers
Linda S. Raver, Raver's Insurance Agency
Christopher T. Oswald, Farmers & Merchants Bank
Joe Borucki, Global Martial Arts Academy
Shane White, White's Bicycles
Lester Hess, Hess Discount Music

Vanessa Freter, Hair "Paige" Salon
Augusto Illiano, New York J & P Pizza
Play Time Child Care Center
First Financial Federal Credit Union
Hughes Trash Removal, The Hughes Family

This is a great example of the partnership and support that Shiloh Middle School has received from the business community.
Thank you!



Vision and Hearing

Vision and Hearing testing will be conducted from August 30, 2011 - September 2, 2011. Please make every effort to have your students attend during this time. October 7, will be the re-screening date.



PHYSICAL EDUCATION

The physical education curriculum is designed to educate students on Skillfulness, Biomechanical Principles, Motor Learning, Exercise, Physiology, Physical Activity and Social Psychological behaviors. Our curriculum for the year is theme based, ie; Throwing and Catching, Striking, Group Initiatives, Creative Movement and Fitness. Our program provides a variety of activities to provide each student with an opportunity to discover an activity that will carry on with them to instill an active healthy lifestyle.

GYM UNIFORMS: In the interest of health, appearance, and protection of the pupils, the wearing of a gym uniform and gym shoes is required. These should be labeled with the student's name. Sweatshirts are recommended for cold weather. It would be advisable to have a guard strap for any student who wears glasses. For safety reasons, **earrings and jewelry CANNOT be worn in class.** Uniforms are available for purchase in the P.E. department. Students may wear plain black shorts and a plain gray shirt if they desire. The price of shorts is \$12.00 and the price of the shirt is \$8.00. Gym bags can also be purchased from the physical education teachers at a cost of \$10.00.

For personal hygiene reasons it is recommended that students carry their gym clothes in a separate gym bag and not in their backpacks, where they keep their school supplies.

We look forward to a fun, healthy educational year.
Mrs. Griffin, Mr. Mays and Mr. Vaughn

Back to School Night

In conjunction with the PTO, "Back to School Night" will be held Thursday, September 8 at 7:00 p.m. Our PTO President or designee will conduct a brief business meeting which will be followed by an introduction of the teaching staff. A Volunteer Training session will be held at 6:30 pm. Parents will then have the opportunity to visit classrooms where teachers will explain instructional programs and curriculum. Please put this important date on your calendar.

FAMILY LIVING MATERIALS PREVIEW NIGHT



We invite parents/guardians to preview the audio visual materials to be used in the Family Life and Human Sexuality program on September 21, 2011, at 6:30 p.m. in the Media Center.

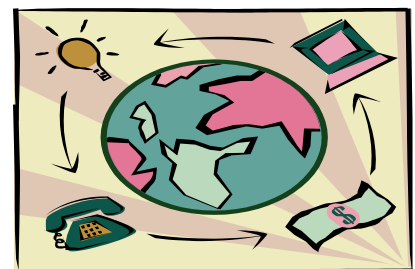
SCHOOL/PARENT COMMUNICATIONS

Throughout the school year, the school will communicate with parents and teachers about learning progress, behavior, and other student responsibilities. This exchange of information is usually in written form and helps students to improve by informing them and their parents of strengths and weaknesses. However, to help us make proper decisions about students, we need interim reports, report card envelopes and other forms signed and returned ***three days*** from the time they are given. We appreciate your cooperation.

Please remember the Home Access Center is available as well. This website will provide you with up to date information regarding your child's grades. <https://mystudent.carrollk12.org/homeaccess/>
Follow these directions to login to your account:

1. Click the above referenced hyperlink to be directed to the "Home Access Center".
2. A page will open: click the "Request Password" link.
3. Enter the email address you provided on your student's emergency card. You will receive an email to that account with a link to a web page. If the email message does not appear within several minutes, check your junk mail folder and make sure it wasn't delivered there. It will come from donotreply@carrollk12.org.
4. Click the link from the email message and follow the instructions on-screen. You will be prompted to answer three questions about one of your students. Once you have answered the questions correctly, your password will appear on-screen. Click the link on that page to be directed to the Home Access Center login screen.
5. Login using your email address and the password that was displayed on-screen. After logging in, be sure to click "Profile" in the top right-hand corner and identify a new password for your account.

We will continue to use the AlertNow Rapid Communication Service to provide parents with information from the school. You do not need to sign up for this system. All information is taken from emergency procedure cards. Please make sure your emergency procedure cards are complete and up to date as changes may occur throughout the year.



STUDENT CLASS SCHEDULE

Time	Class/Subject	Teacher	Room #
1			
2			
3			
4			
5			
6			
7			
8			

TEAM AND ROOM ASSIGNMENTS

<p>Team One</p> <p>Room 150 Ms. Guy, Math Room 151 Ms. Dixon, Social Studies Room 152 Ms. Feustle, RLA Room 153 Ms. Dukes, RLA Room 169 Ms. Briggs, Science</p>	<p>Team Two</p> <p>Room 172 Ms. Knox, Science Room 191 Ms. Dolch, RLA Room 192 Ms. Foard, Math Room 193 Ms. VanSant, Social Studies</p>	
<p>Team Three</p> <p>Room 302 Mr. Black, Social Studies Room 303 Ms. Browning, RLA Room 304 Ms. Weiland, Math Room 306 Ms. Sexton, Science</p>	<p>Team Four</p> <p>Room 309 Mr. Dotterweich, Social Studies Room 313 Mr. Ellis, Science Room 317 Ms. Bitzel, Math Room 318 Ms. Simpson, RLA</p>	
<p>Team Five</p> <p>Room 272 Mr. Fernandez, Science Room 290 Ms. Gelhaus, RLA Room 291 Mr. Walker, Social Studies Room 292 Ms. Fosnot, Math Room 293 Ms. Flowers, RLA</p>	<p>Team Six</p> <p>Room 250 Ms. Sheely, RLA Room 251 Mr. Chrvala, Social Studies Room 252 Ms. Spalt, Math Room 253 Ms. Bosley, RLA Room 269 Ms. Davis, Science</p>	
<p>Related Arts Team</p> <p>Room 119 Ms. Hobbs, Vocal Music Room 200 Mr. Reigel, Art Room 301 Ms. Finch, Health Room 500 Ms. Hull, FACS Room 515 Mr. Blizzard, Tech Ed Room 315 Ms. Wolff, Spanish</p>	<p>Physical Education Team</p> <p>Room 217 Mr. Vaughn, Physical Education Room 216 Mr. Mays, Physical Education Room 203 Ms. Griffin, Physical Education Room 122 Mr. Sullivan, Instrumental Music Room 160 Ms. Owings, Media Specialist</p>	
<p>Resource Team</p>		
<p>Room 400 Ms. Heinle Room 314 Ms. Budge Room 166 Ms. Bell Room 173 Ms. Wirsz</p>	<p>Room 190 Ms. Ashwell, Reading Specialist Room 177 Ms. Istvanic Room 275 Ms. Callahan Room 308 Mr. Scott</p>	<p>Room 266 Ms. Bible</p>



CCPS BUS PASS POLICY

School bus assignments will be published in the local newspapers. They will appear in the Carroll County Times on August 23rd. If you are confused about your bus stop location call the school.

The school office receives many requests to issue bus passes because a student wishes to ride a different bus from his or her assigned bus or to get off at a different bus stop. The Transportation Office of Carroll County Public Schools does not allow students to do this except in cases of "an emergency, extenuating circumstances, medical necessity or to a regular (daily) work location."

A student **may not** ride a different bus or get off at a different stop to go to a friend's house to work on a project or because he or she needs a ride to an after school activity. Students **are not permitted to use alternate buses or bus stops** to travel to a student service location or to a job. They may not ride different buses because parents' work schedules might change for a day unless this situation arises as an emergency during that particular day. If a parent's work schedule changes for a day, or a student needs a ride to some type of after school activity, the student and his/her parents must make other arrangements for transportation either the night before or that morning. **Shiloh Middle School will not be able to issue bus passes for these reasons.**

If a student needs a bus pass because some type of emergency has arisen, he or she must bring a note explaining the situation to the office in the morning before school or have a parent call an administrator during the school day at 410-386-4570. In some cases the student will be asked to speak to an administrator directly about the emergency that necessitated the written request for a bus pass.

Students and parents should be sure that they have tried every way possible to arrange the transportation for the emergency before bringing a request for a bus pass to the school office.



PTO FUNDRAISER

Welcome back everyone! As the year begins we are quickly approaching our main fundraiser for the year. Our fifth annual Howl-a-Thon will be held this year on September 30th. Pledges will be accepted August 30–September 16. (more information to follow). Students will be receiving information about the Howl-a-Thon and, of course, prizes!

Shiloh Middle School

SCHOOL BUS SAFETY

Please help us keep our school buses safe and orderly by reviewing the following with your child prior to the opening of school:

A. FOLLOW THE RULES.

1. I may only carry musical instruments on the bus which can be placed on my lap without disturbing others.
2. **I may only ride my regularly assigned bus and get on and off at my assigned stop.**
3. I should be at the bus stop 5 minutes before pick up time.
4. I should never stand on the roadway while waiting for the bus.
5. **I am to sit in my assigned seat promptly and remain seated for the entire ride to and from school.**
6. **I am to face the front and keep my feet, books, and other articles out of the aisles.**
7. At no time will I damage the school bus.
8. My hands and head should always be kept inside the bus.
9. **I must never eat, smoke, or use abusive language on the bus.**
10. Only when the bus comes to a full stop should I attempt to get off.
11. **My conduct should be quiet and orderly, and I should always talk in a normal speaking voice.**
12. I am to cross ten feet in front of the bus only if I live on the opposite side of the road.

B. FIGHTING AND OTHER UNSAFE ACTIONS WILL CAUSE IMMEDIATE SUSPENSION.

C. REMEMBER: THE BUS DRIVER IS IN CHARGE OF THE BUS AND IS AUTHORIZED TO ASSIGN SEATS.

D. SUSPENSION OF BUS RIDING PRIVILEGES:

1. **FIRST REFERRAL** -school administrator will send a letter to parents.
2. **SECOND REFERRAL** - school administrator will suspend bus riding privileges for up to one week.
3. **THIRD REFERRAL** -school administrator may suspend bus riding privileges for one week or longer.



MEDICATIONS FOR STUDENTS WHILE IN SCHOOL

If possible, alternative plans should be made to avoid the administration of medication in school. Parents are encouraged to consult their physician to discuss the possibility of administering medication either before or after school. If alternative plans cannot be made, parental consent and instructions must be given before the school can administer any medication. Please note the following medication procedure.



All medication (prescription and over-the-counter), excluding Ibuprofen (Advil) and Acetaminophen (Tylenol) **must have a Doctor's Order and Parent Permission** for the medication to be administered in school. Parents can still bring in Acetaminophen (Tylenol) and Ibuprofen (Advil) for administration in school without a Doctor's Order. Nurses will continue to administer Acetaminophen and Ibuprofen in package recommended dosage with only parent permission.

NON-PRESCRIPTION AND PRESCRIPTION MEDICINE

1. Must be in the prescription bottle properly labeled with the student's name, name of the medication, dosage, and the doctor's name.
2. Medication consent form must be completed **by the doctor and parent** and on file with the school.

ADDITIONAL SUGGESTIONS: Remember! **Medications must be brought in by a responsible adult**. Students are not to transport medications to or from school, as this is a violation of the Drug/Alcohol policy. Any student in violation of this will be referred to the administration. Your child may be suspended, and it becomes a part of his or her school record. Don't put your child in this situation; contact the school if you are unsure of the policy. Medications include: (prescription/non prescription) Liquids, pills, creams, ointments, acne wipes, nasal sprays, eye drops, vitamins, herbal remedies, and any item containing medication. The only exception to this policy is a student may carry inhalers with a signed consent form from a medical doctor. Nonmedicated cough drops are permitted with a parent note. Please do not send any more medication than is needed. We cannot send medications home with a student. The parent is responsible for picking it up at the school. Also, we have been told that pharmacists will provide two bottles - one for home and one for school use. For your convenience, **a Medication Consent Form is attached to this newsletter.**

A.H.E.R.A.

As a requirement of the AHERA (Asbestos Hazard Emergency Response Act) as mandated by the EPA (Environmental Protection Agency), we are asked to share the following notice with you.

The Asbestos Hazard Emergency Response Act (A.H.E.R.A.) management plans for all buildings owned or leased by the Board of Education of Carroll County Public Schools are available for review at the individual Carroll County School locations and at the Office of Plant Operations located at: 191 Schaeffer Avenue, Westminster, MD 21157. Management plans are required by the Environmental Protection Agency (EPA) and depict the location, amount, condition, and response action projected for any asbestos-containing materials, if any are located in the school building.

HOMEROOM ASSIGNMENTS

Homeroom assignments should be on the front page of this newsletter.



SIXTH , SEVENTH, and EIGHTH GRADE HOMEROOMS:

Please see the staff list on the back of the school supply list to determine the team that your student is on. For example, Homeroom 150, Teacher Guy will be Team One.