

Carroll County Public Schools

**State of the Carroll County
Public School System
2010 - 2011**





For the Record...





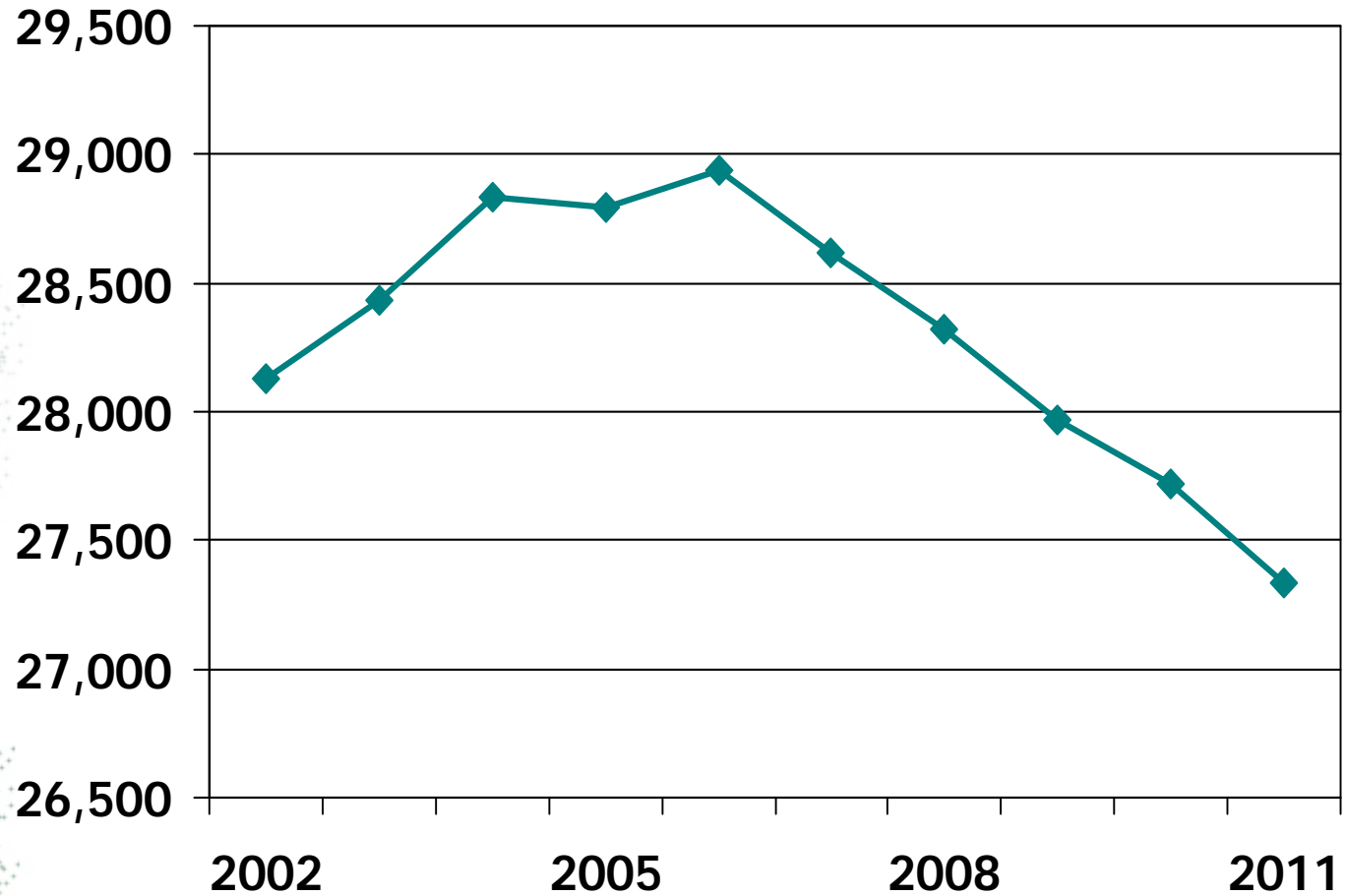
Students



Schools

Schools	Number
Elementary	23
Middle	9
High	8
Other Schools	
Career and Technology Center	
Carroll Springs School	
Flexible Student Support	
Gateway/Crossroads Middle School	
Outdoor School	
PRIDE Program	

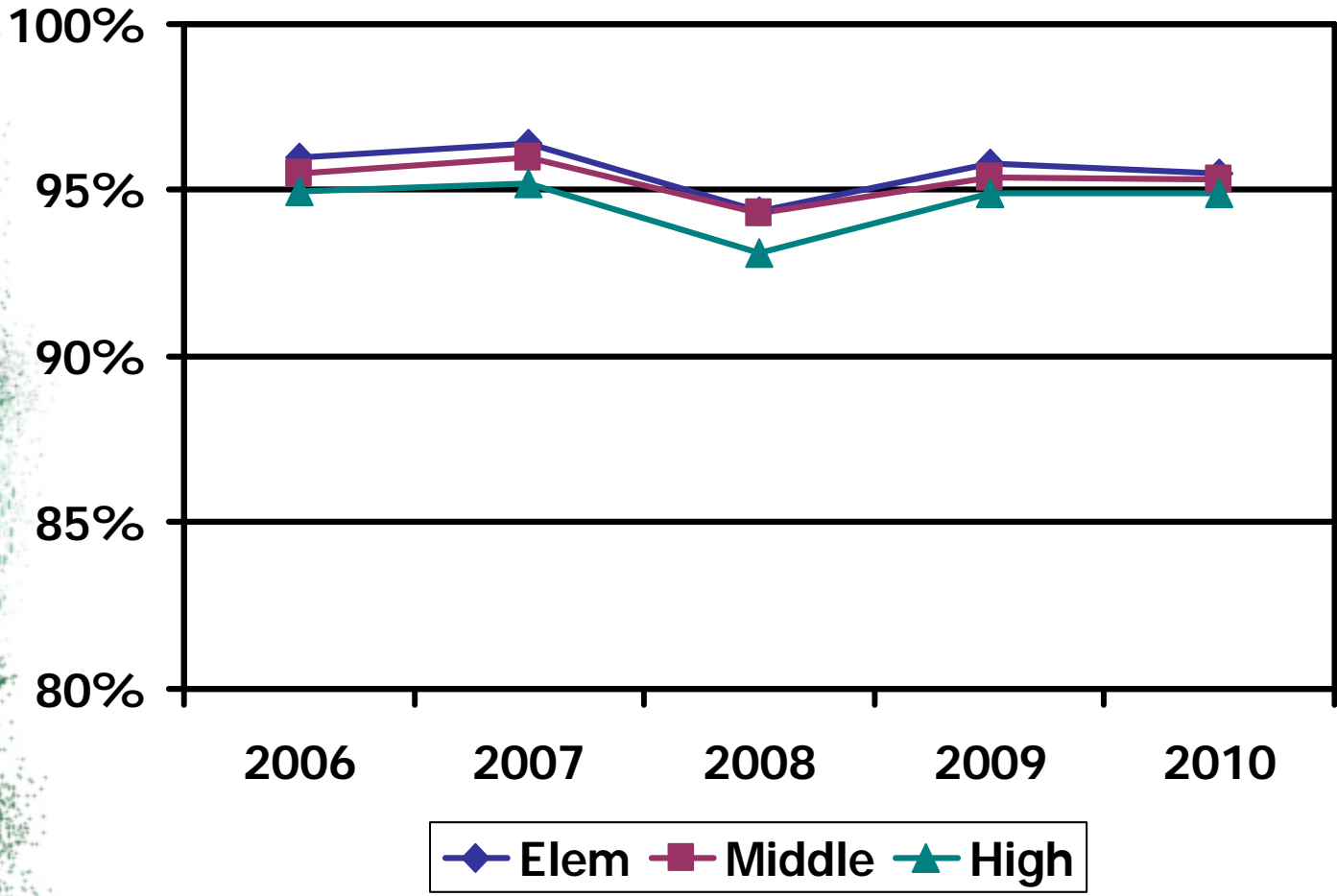
10 Year Change in Student Enrollment



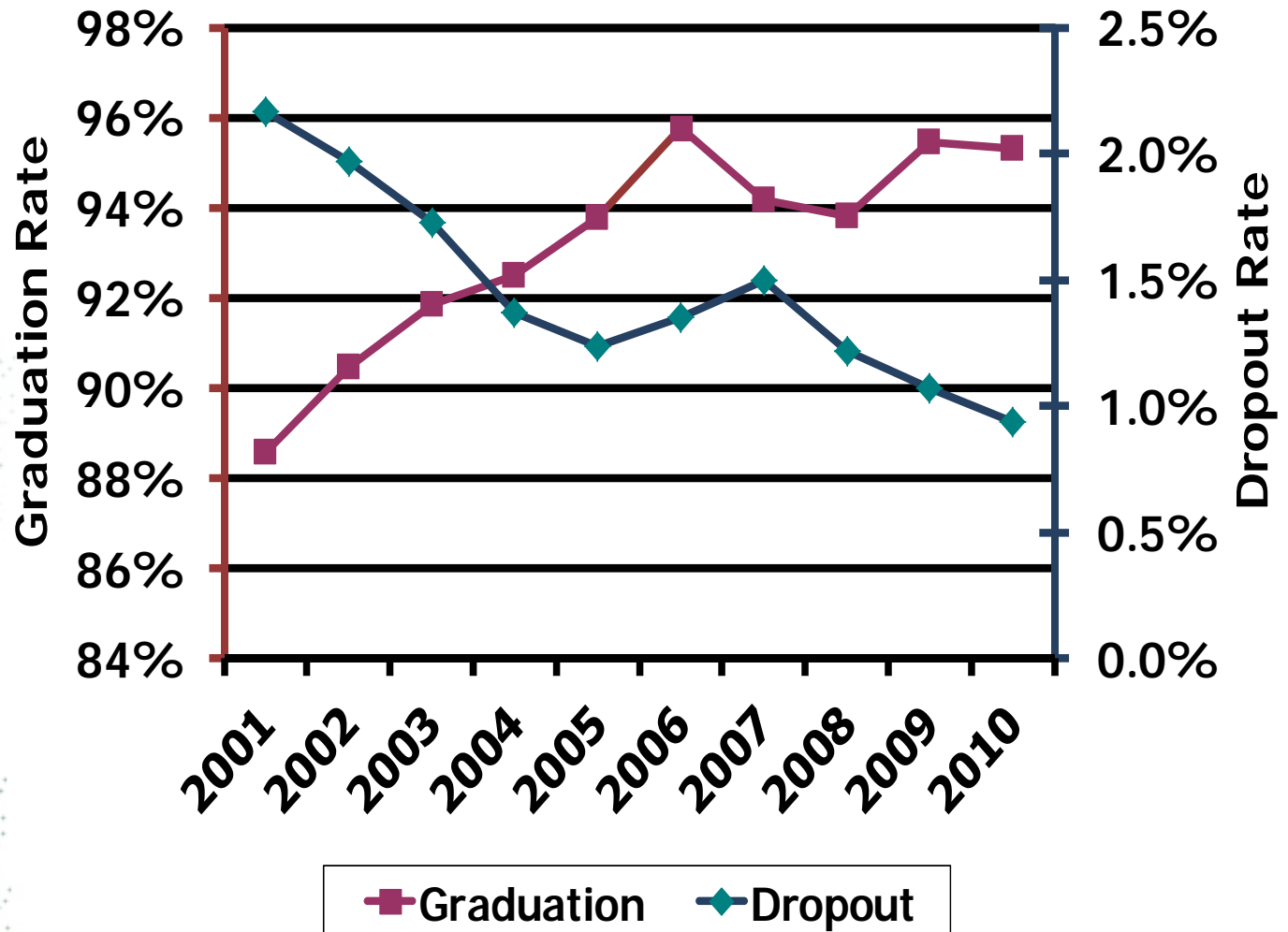
Selected Student Demographics School Year 2009-2010

Characteristic	Percent	State Rank
Free and Reduced Meals	15%	24
Title I	.7%	23
Special Education	11%	12
Limited English Proficiency	.7%	22

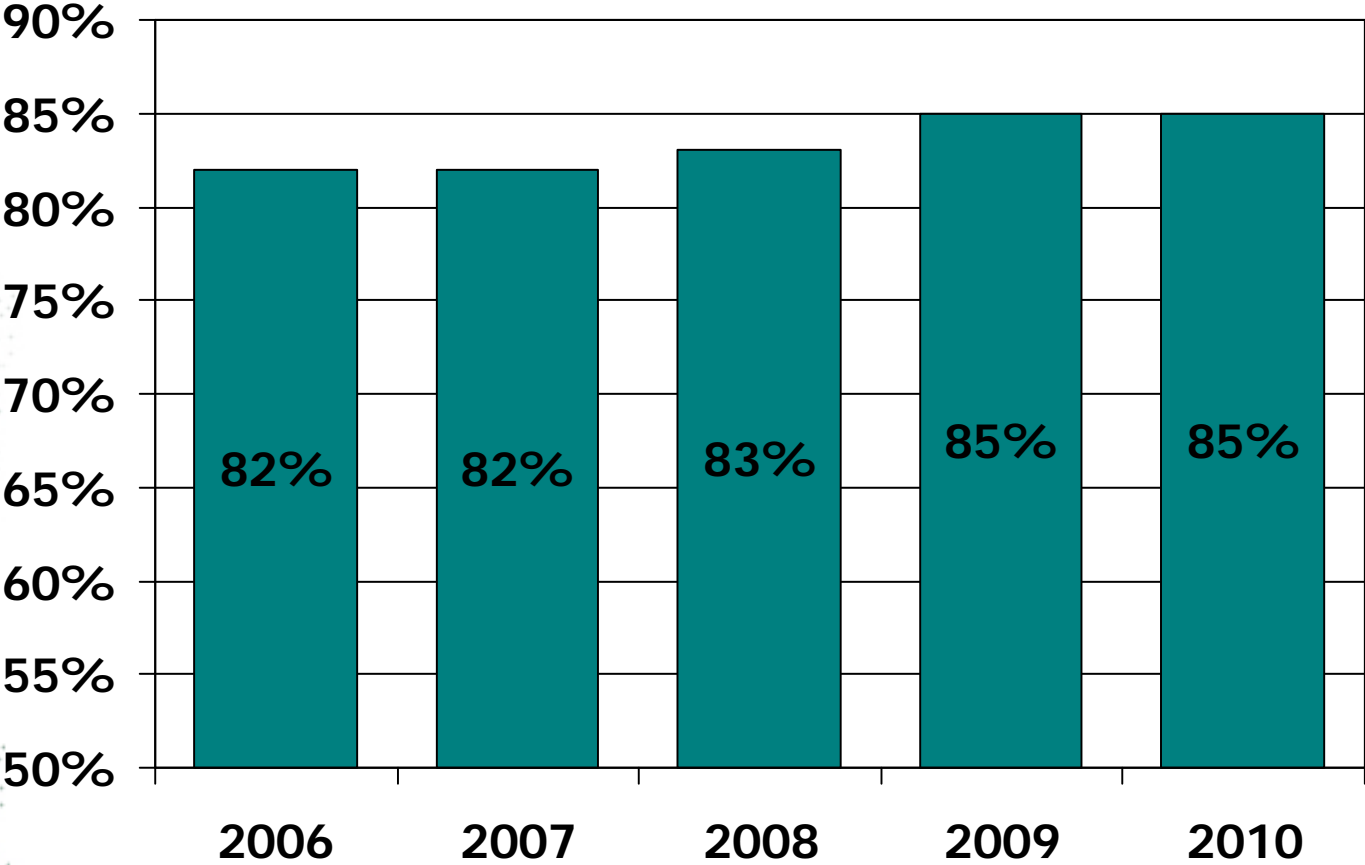
Student Attendance



Dropout Rate & Graduation Rate



Students Continuing Education After Graduation





Staff



State Rankings: Staff Per 1,000 Students

	Total Number	Per 1000 Students	State Ranking
Total Staff	3,593.7	130.3	19 th
Teachers ¹	2,035.2	73.8	15 th
Inst. Assistants	368.4	13.36	17 th
Admin ²	199.6	7.2	16 th

¹ Teachers, Media Specialists, and Counselors

² Superintendents, Deputy, Associate, Assistant Superintendents, Directors, Coordinators, Supervisors, and Administrators including School-based Administrators

Source: Maryland Public Schools. (June 2010).

Staff Employed at School and Central Office Level.

Teacher Turnover FY05 – FY10

Year	% Turnover
2009 – 2010	6.31%
2008 – 2009	5.95%
2007 – 2008	11.40%
2006 – 2007	10.24%
2005 – 2006	12.80%



Parent Volunteers

Registered Parent Volunteers

Year	Elem	Middle	High	Other	Total
10-11	8,844	3,641	2,534	56	15,075
09-10	9,007	3,985	2,679	32	15,703
08-09	9,292	3,944	2,462	18	15,716

Finance



Wealth Per Pupil FY 2010

County	Wealth p/pupil	Rank
Worcester	\$1,449,183	1
Montgomery	\$764,044	3
Howard	\$563,647	7
Baltimore Co.	\$510,690	8
Frederick	\$440,905	10
<i>Carroll</i>	<i>\$430,314</i>	<i>12</i>
Harford	\$415,952	13
State Average	\$506,438	

Source: Md. State Dept of Ed. 2009-2010 Fact Book

(Wealth includes adjusted real property assessment, public utility operating property, and net taxable income)

Per Pupil Expenditures FY 2009

County	Cost Per Pupil	Rank
Worcester	\$15,498	1
Montgomery	\$14,969	2
Howard	\$14,166	6
Baltimore Co.	\$12,236	11
Frederick	\$11,719	16
<i>Carroll</i>	<i>\$11,671</i>	<i>17</i>
Harford	\$11,542	18
State Average	\$13,013	

Source: Md. State Dept of Ed 2009-2010 Fact Book (FY 2009 is latest year available)



Student Achievement

Maryland School Assessment Reading - State Rankings

Grade	2010	2009	2008
Grade 3	7	4	2
Grade 4	4	5	5
Grade 5	1	5	2
Grade 6	1	1	1
Grade 7	1	3	1
Grade 8	2	4	2

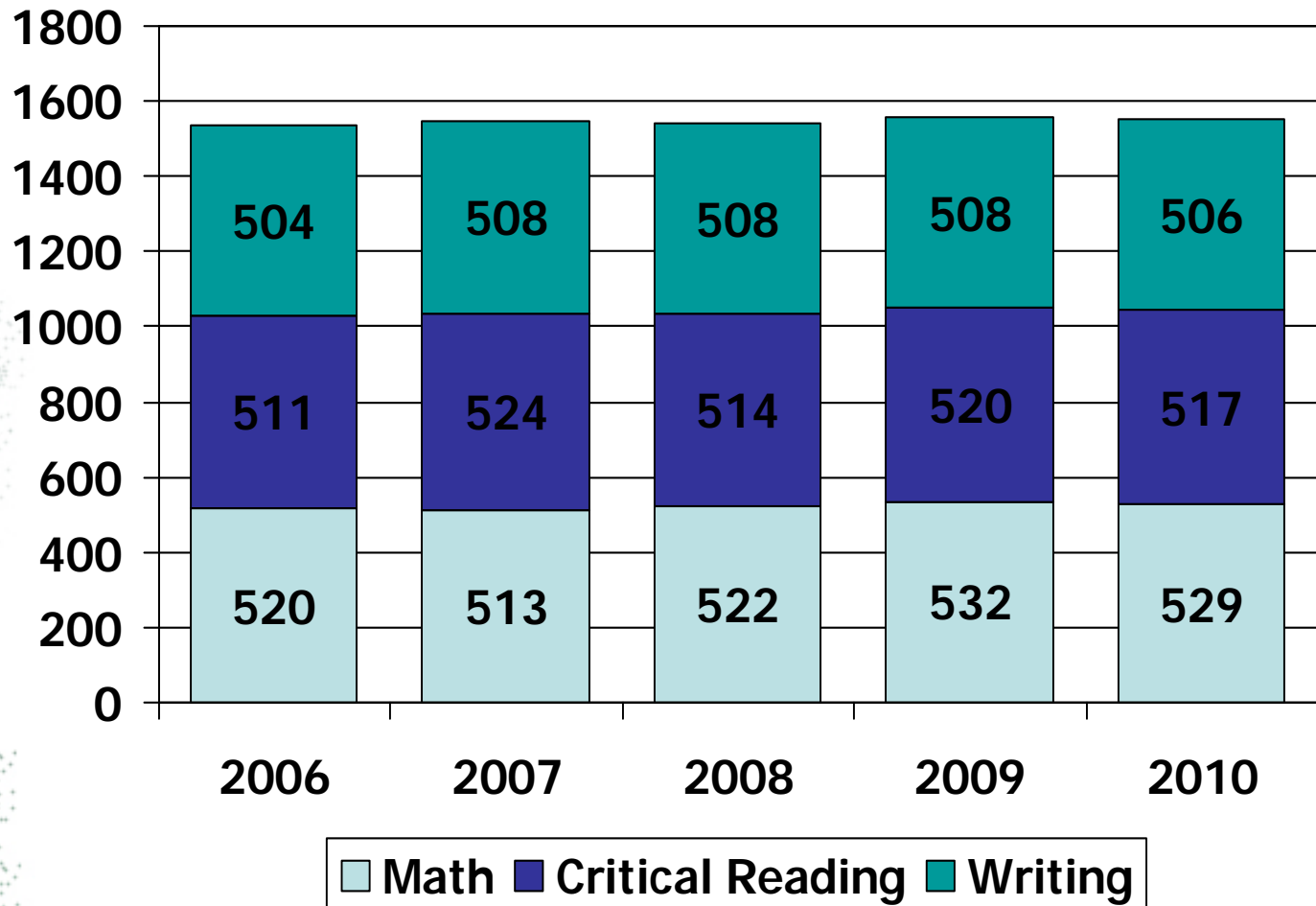
Maryland School Assessment Math – State Rankings

Grade	2010	2009	2008
Grade 3	3	3	2
Grade 4	4	2	2
Grade 5	2	2	2
Grade 6	1	1	2
Grade 7	6	5	3
Grade 8	9	6	7

2010 Overall Ranking

School System	Total PRO/ADV	% PRO/ADV	Rank
All Public Schools	596,152	82.14%	
Worcester	5,074	90.92%	1
Howard	40,342	90.52%	2
Carroll	21,945	90.26%	3
Queen Anne's	6,010	90.15%	4
Calvert	13,419	90.01%	5
Frederick	30,848	88.23%	6

SAT Scores Five Year Comparison



Percent Passing Advanced Placement Exams

	2010	2009
AP #	3293	3502
Exam #	2192	2281
Percent Scoring 3 or Better		
CCPS	66	67
State	61	63
Nation	58	58



Challenge

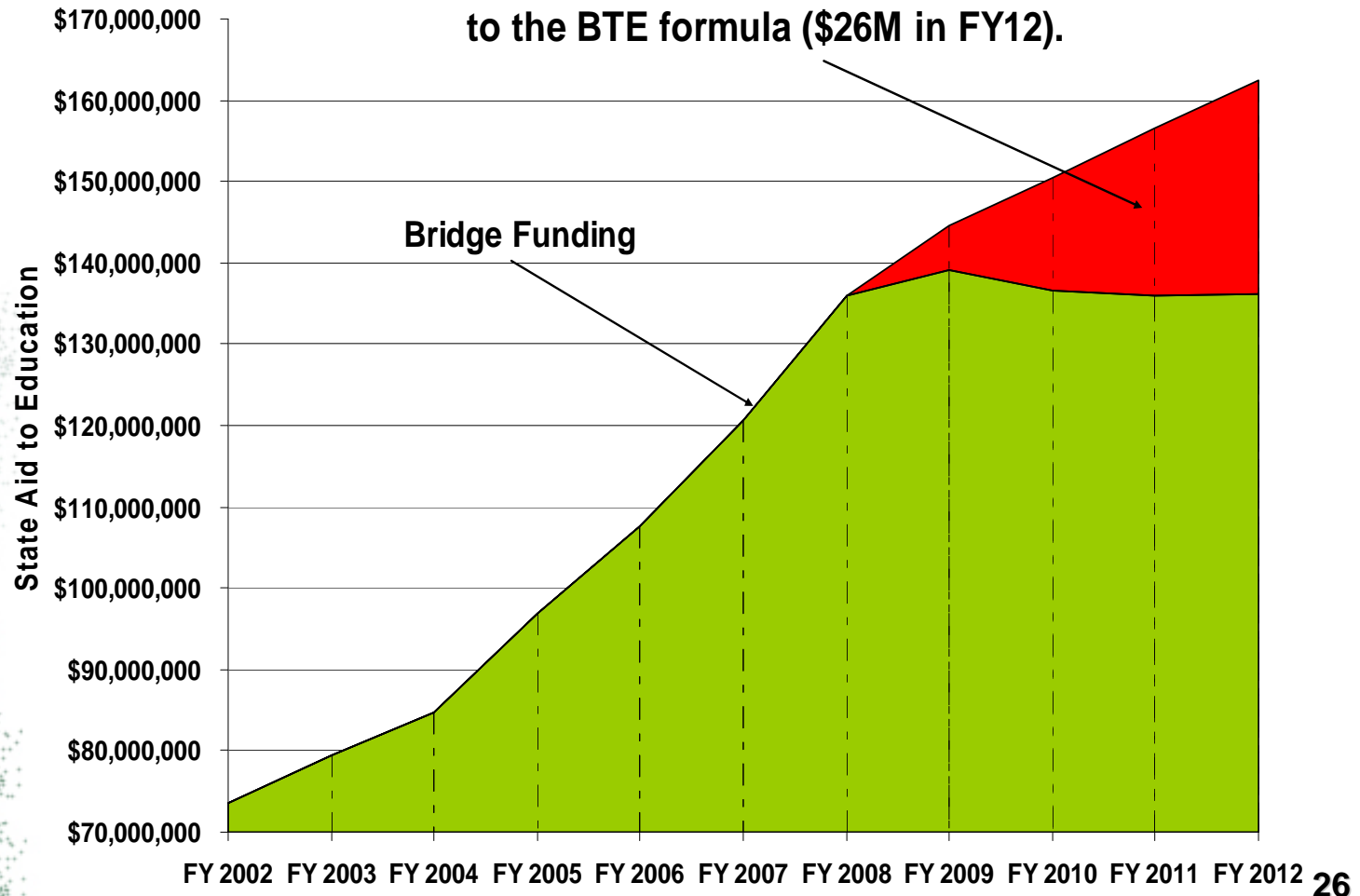


Funding



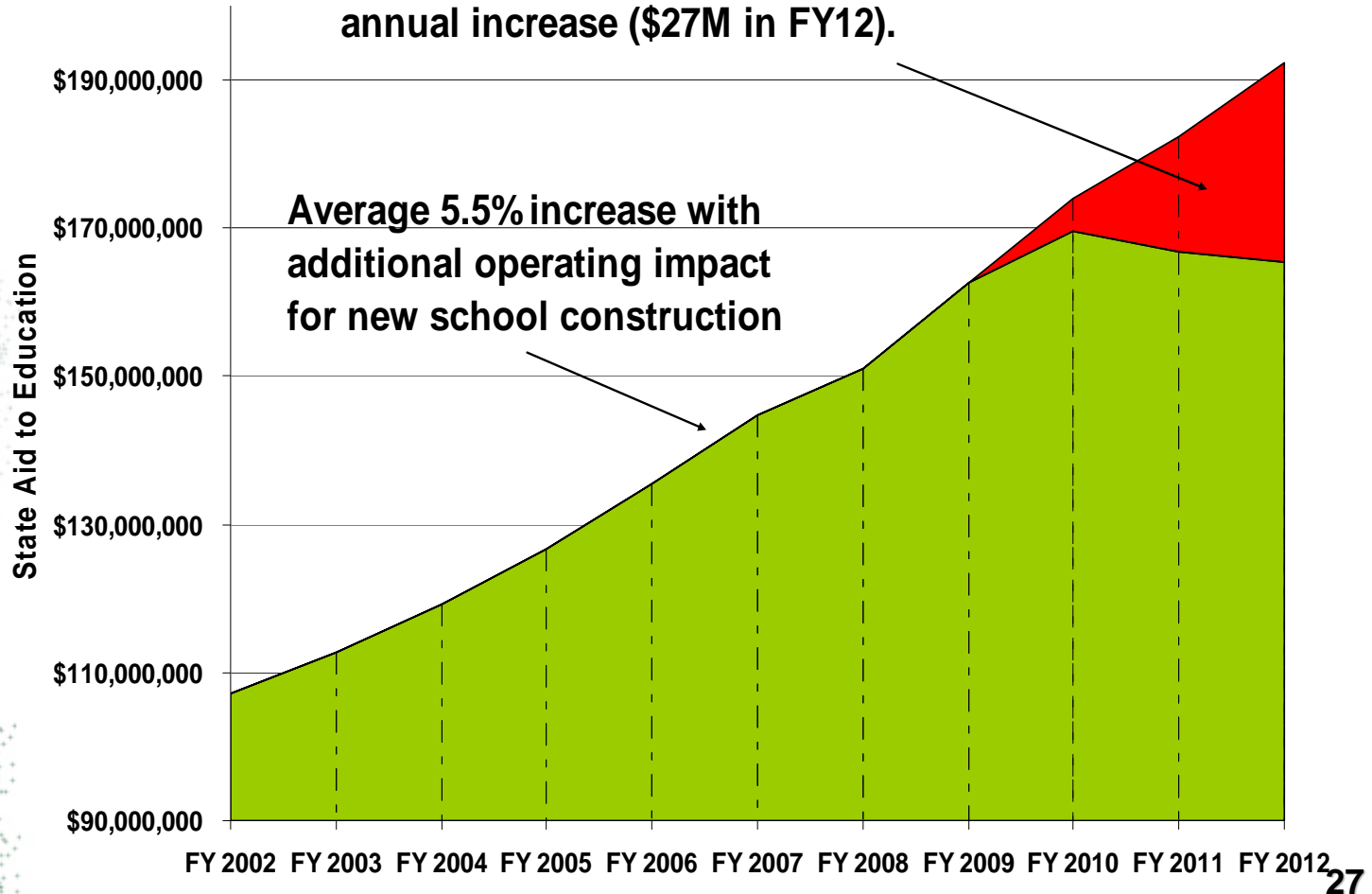
Changes in State Revenue

This area represents the estimated loss in State Aid to Education as a result of changes to the BTE formula (\$26M in FY12).



Changes in Local Revenue

This area represents the estimated loss in local aid to education if the county had continued its 5.5% annual increase (\$27M in FY12).



Reductions from 2009 - 2012

\$16.6 M

- **Eliminated 56.5 teacher and 52.6 non-teacher positions/professional service contracts**
- **Reduced maintenance projects/office operating budgets**
- **Eliminated after-school Community Learning Centers**
- **Froze employee salaries**
- **Reduced hourly and temporary staff**
- **Eliminated or reduced travel, food allowances, and professional development opportunities**
- **Reduced work year for selected employee classes**

Revenue Increases

- **Increased and expanded athletic fee to include cheerleading**
- **Charged for applicant fingerprinting**
- **Using Federal Stimulus and Jobs Bill funds as a temporary funding bridge**

FY13 Operating Budget

- **General Assembly Special session**
 - *Topic – Pass back of the cost of teacher pension to counties.*
- **Declining Enrollment**
 - *Less State Dollars*
 - *3% Increase in County's Five -Year Plan*
- **More streamlining needed to provide the same quality instructional services to students.**
- **Less federal dollars as we move away from formula-driven to competitive programs.**



Challenge

**Continue to Provide a Quality
and Comprehensive
Educational Program for the
Children of Carroll County**

Challenge

Meeting the Demands of Federalized Education



Initiatives



Align curriculum with Common Core Standards

Align resources with instructional needs

Streamline administrative services to schools

Foster positive and productive relationships with partner agencies/employee groups

Redesign professional development

Promote seamless transitions from elementary to middle and middle to high

Increase organizational efficiencies

Parting Words

- **Education will always have successes and challenges.**
- **School systems reflect the community they serve. As our community expands, so does its influence on our public schools.**
- **The success of our students does not rest solely on the size our pocketbook, but on the commitment of our community.**